

A Complete
Official
Road Guide
of the Lincoln Highway
FIFTH EDITION



The Lincoln Highway Association
National Headquarters, Detroit, Michigan

Iowa

The Logs shown here are for the convenience of Lincoln Way tourists who desire to divert north or south of the Lincoln Way to some of the principal points of interest. In showing these routes the Association has selected the shortest and best.

Iowa Lincoln Way Mileage at a Glance Main Points Only

00	Clinton, Iowa	354
19	DeWitt, Iowa	335
47	Clarence, Iowa	307
64	Lisbon, Iowa	290
80	Cedar Rapids, Iowa	274
115	Belle Plaine, Iowa	239
132	Tama, Iowa	222
153	Marshalltown, Iowa	201
189	Ames, Iowa	165
204	Boone, Iowa	150
231	Jefferson, Iowa	123
260	Carroll, Iowa	94
286	Denison, Iowa	68
332	Missouri Valley, Iowa	12
354	Council Bluffs, Iowa	00

CLINTON, IOWA to ST. LOUIS, MO. 496 Miles

Mississippi River Scenic Highway

*00	Clinton, Iowa	496
6	Camanche, Iowa	490
10	Shaffton, Iowa	486
14	Follets, Iowa	482
20	Princeton, Iowa	476
25	LeClaire, Iowa	471
30	Pleasant Valley, Iowa	466
39	Davenport, Iowa	457
54	Montpelier, Iowa	442
67	Muscatine, Iowa	429
121	Burlington, Iowa	375
241	Ft. Madison, Iowa	255
265	Keokuk, Iowa	231
322	Quincy, Ill.	174
337	Hannibal, Mo.	159
386	Rockyford, Mo.	110
399	Auburn, Mo.	97
447	Dardene, Mo.	49
472	St. Charles, Mo.	24
496	St. Louis, Mo.	00

*On the Lincoln Highway.

CLINTON, IOWA to DUBUQUE, IOWA ST. PAUL and MINNEAPOLIS, MINN. 345 Miles

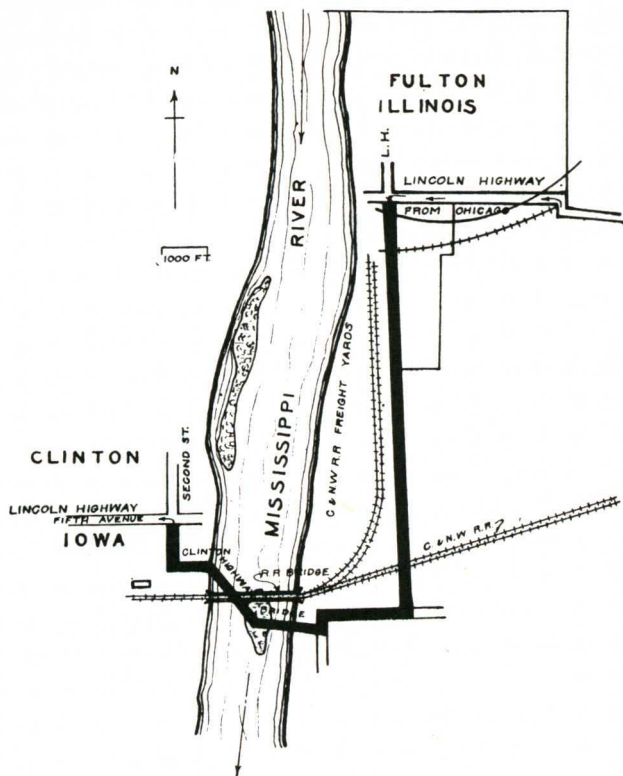
*00	Clinton, Iowa	345
10	Kiel, Iowa	335
14	Goose Lake, Iowa	331
24	Charlotte, Iowa	321
32	Delmar, Iowa	313
40	Maquoketa, Iowa	305
46	Hurstville, Iowa	299
56	Fulton, Iowa	295
61	Zwingle, Iowa	284
65	Dubuque, Iowa	280
93	Holy Cross, Iowa	252
134	McGregor, Iowa	211
176	LaCrosse, Wis.	169
215	Winona, Minn.	130
267	Lake City, Minn.	78
285	Red Wing, Minn.	60
313	Hastings, Minn.	32
335	St. Paul, Minn.	10
345	Minneapolis, Minn.	00

*On the Lincoln Highway.

CEDAR RAPIDS to KEOKUK, IOWA 126 Miles

*00	Cedar Rapids, Iowa	126
10	Shueyville, Iowa	116
19	North Liberty, Iowa	107
27	Iowa City, Iowa	99
35	Hills, Iowa	91
40	Riverside, Iowa	86
55	Ainsworth, Iowa	71
60	Crawfordsville, Iowa	66
65	Wayne, Iowa	61
77	Mt. Pleasant, Iowa	49
88	Salem, Iowa	38
93	Mt. Hamil, Iowa	33
105	Donnellson, Iowa	21
120	Summitville, Iowa	6
126	Keokuk, Iowa	00

*On the Lincoln Highway.



CROSS THE MISSISSIPPI OVER THE SOUTH BRIDGE

At Fulton, Illinois, turn left at the first turn. This is the shortest and quickest route to Clinton, Iowa, the next town on the Lincoln Highway.

No speed cops patrol this stretch as is the case with other routes and you also have a splendid view of the C. & N. W. Ry. Bridge over the Mississippi River, which is a sight worth seeing.

Clinton-Illinois Bridge Co.
CLINTON, IOWA

JEFFERSON HIGHWAY—NORTH AND SOUTH

COLO, IOWA
to
KANSAS CITY, MO.
305 Miles

*00	Colo, Iowa	305
* 7	Nevada, Iowa	298
19	Cambridge, Iowa	286
45	Des Moines, Iowa	260
64	Indianola, Iowa	241
78	Medora, Iowa	227
95	Osceola, Iowa	210
128	Davis City, Iowa	177
165	Bethany, Mo.	140
176	New Hampton, Mo.	129
183	Albany, Mo.	122
199	Ford City, Mo.	106
222	Rochester, Mo.	83
241	St. Joseph, Mo.	64
270	Edgerton, Mo.	35
283	Smithville, Mo.	22
294	Gashland, Mo.	11
305	Kansas City, Mo.	00

*On the Lincoln Highway.

COLO, IOWA
to
ST. PAUL, MINN.
225 Miles

*00	Colo, Iowa	225
20	Hubbard, Iowa	205
36	Iowa Falls, Iowa	189
54	Hampton, Iowa	171
60	Chapin, Iowa	165
64	Sheffield, Iowa	161
71	Rockwell, Iowa	154
83	Mason City, Iowa	142
94	Manley, Iowa	131
105	Northwood, Iowa	120
116	Albert Lea, Minn.	109
139	Geneva, Minn.	86
157	Owatonna, Minn.	68
173	Fairbault, Minn.	52
188	Northfield, Minn.	37
202	Farmington, Minn.	23
210	Rosemount, Minn.	15
225	St. Paul, Minn.	00

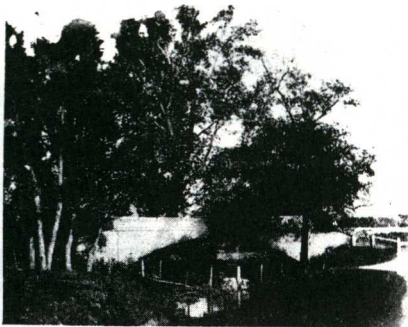
*On the Lincoln Highway.

Iowa

LINCOLN HIGHWAY STATE CONSUL, D. E. GOODELL
Tama, Iowa

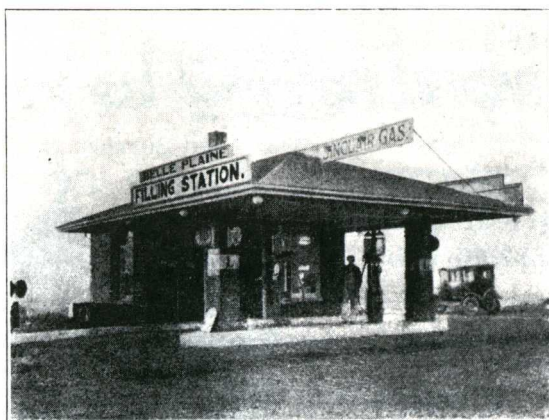
GENERAL INFORMATION

THE Lincoln Highway tourist crossing the state of Iowa will travel through one of the richest rural communities in the world. A trip by motor car across the state during the summer months is a revelation of the productive possibilities and agricultural resources of this wonderful "garden state" of the Union. The Lincoln Highway across Iowa traverses a gently rolling open country, a beautiful and interesting drive.



An Iowa beauty spot on the Lincoln Way

Up to the very recent past legal restrictions prohibited the anticipation of public revenue for the construction of hard-surfaced roads, by bond issue. Proper highway development in Iowa is still retarded by a very inadequate highway law which puts the development of economically surfaced through highways at the mercy of county option. Any one reactionary county



Belle Plaine Filling Station

SINCLAIR GAS AND OILS

Free Crank Case Service — Drain Pit — A Modern Ladies' Rest Room — Free Air and Water — and the Best of Service.

INDEPENDENT

ON LINCOLN HIGHWAY SOUTH SIDE OF MAIN STREET

O. A. RUCKER, Prop.

Section 12

Iowa

CHELSEA

C. R. Mar. Control, Center of Village.

41.1 32.1 Pop. 600. Alt. 789 feet. Tama County. On the Iowa River. Two hotels, 1 garage. Local speed limit, 12 miles per hour, enforced. Two banks, C. & N. W. Railroad, 11 general business places, express company, 2 telephone companies. Good fishing and free camp grounds on Iowa River.

6.8

Graded Dirt L. H. Local Consuls, E. P. Willey and Homer Gardner.

GLADSTONE

C. R. Mar. Control, Railroad Station.

47.9 25.3 Pop. 20. Tama County. No tourist accommodations. C. M. & St. P. Railroad, telegraph station.

4.0

Graded Dirt

The W. F. Stewart Company

Manufacturers of

Automobile Bodies

Flint,

Michigan

