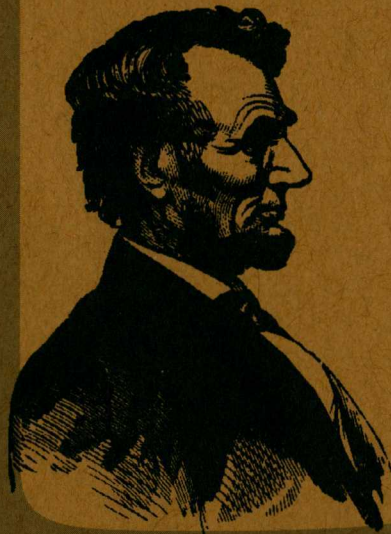
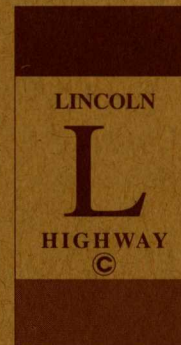


The  
LINCOLN  
HIGHWAY  
IOWA MAP PACK

*"A Great Iowa Tour"*



\*  
HE  
356  
.L7  
L564  
1994



**Top Photo:** L & J "fillin" station at "Nilands Corner, Colo, Iowa in the late 1920's. Here the Lincoln and Jefferson Highways joined and ran together for seven miles to Nevada. Photo courtesy Nilands.

**Bottom Photo:** In the fall of 1920 Marsh Construction Co. with their steam paver laying cement east of Jefferson. Except for the seedling mile, this was the first cement laid on the Lincoln Highway in Iowa.

**"A CONTINUOUS CONNECTING IMPROVED HIGHWAY FROM THE ATLANTIC TO THE PACIFIC"**



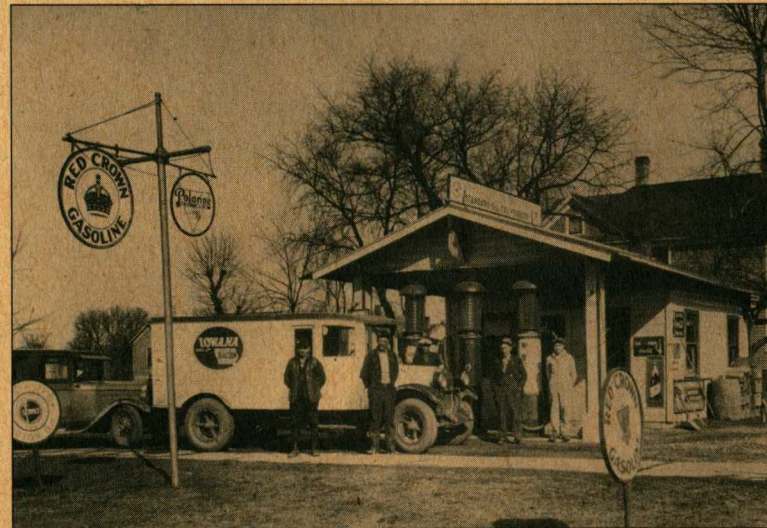
**WHAT TO SEE IN PRESENT DAY  
BENTON COUNTY**

**Belle Plaine**

- George Preston's station  
(4th Ave. & 13th St.)
- George's Cabins
- Original site of George's station  
(7th Ave. & 19th St.)
- Maid-Rite (3rd Ave. & 13th St.)
- Sankot's Garage - Case sign  
(8th Ave. & 13th St.) NRHP  
(National Register of Historic  
Places)
- Lincoln Cafe (8th Ave. & 13th St.)
- King Theatre (12th St.)
- Main Street, including bakery
- Highway 131 - outstanding section of  
original Lincoln; right of way and  
rural landscape
- Large rural farmhouse
  
- The Lincoln rejoins US 30 to take flat  
route straight to Cedar Rapids after  
avoiding hills of Tama and Benton  
County.
  
- Craft shop (old station) (US 30)
- Roadhouse Youngville Station  
Refurbishing project

**Other Sites of Interest**

Amana Colonies



*Top Photo: The "gravel spotter" does his job on a road improvement project.  
(in 1914 or 1915) Photo courtesy of the DOT.*

*Bottom Photo: The George Preston station in the 1920's at Belle Plaine.  
Preston Family photo.*

**BELLE PLAINE**

Pop. 3,887. Alt. 824 feet. Benton County. Three hotels, 3 garages.  
Local speed limit, 12 miles per hour, enforced. Three banks, 1 rail-  
road, 75 general business places, express company, telephone compa-  
ny, 2 newspapers, Commercial Club, Camp grounds.  
L. H. County Consul, O. C. Burrows; L. H. Local Consul, James  
Herring.

**COMMERCIAL CAFE**

DAY AND NIGHT SERVICE  
"All American"

.....  
BELLE PLAINE, IOWA

1912

LINCOLN

**L**

HIGHWAY

©

L. E. Malcolm

Garage

Automobile Agency

1912

Trouble Finders

Gasoline, Repairs

Opposite Official Hotel. Look Us Up.

Belle Plaine, Iowa

**THE BURLEY HOTEL**

1912

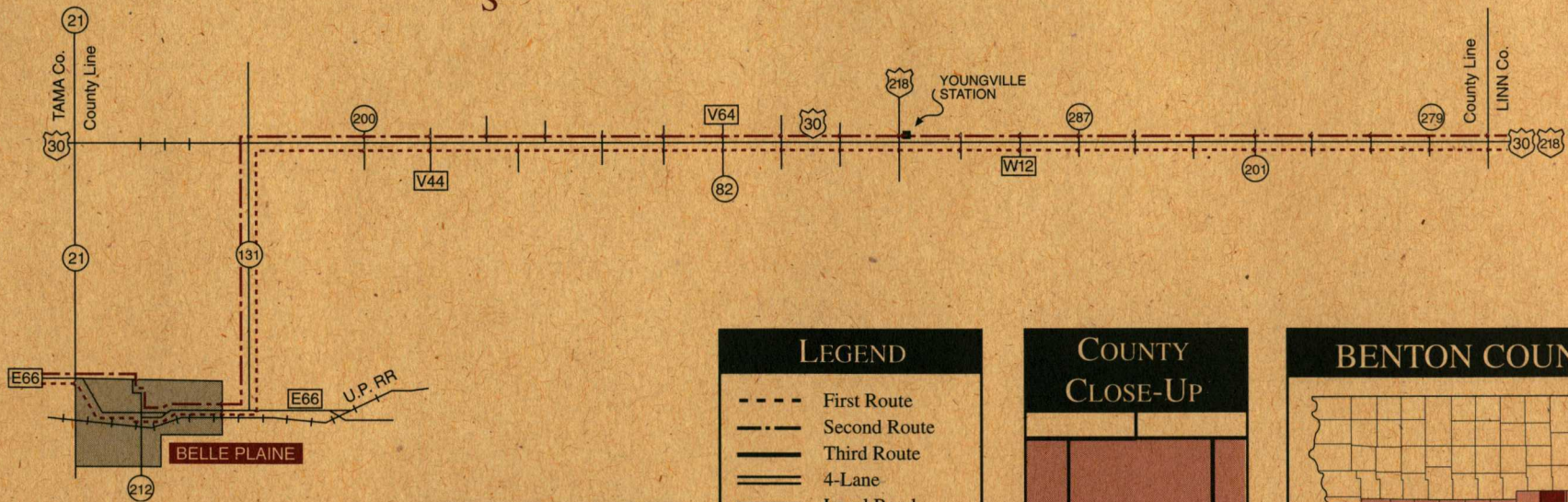
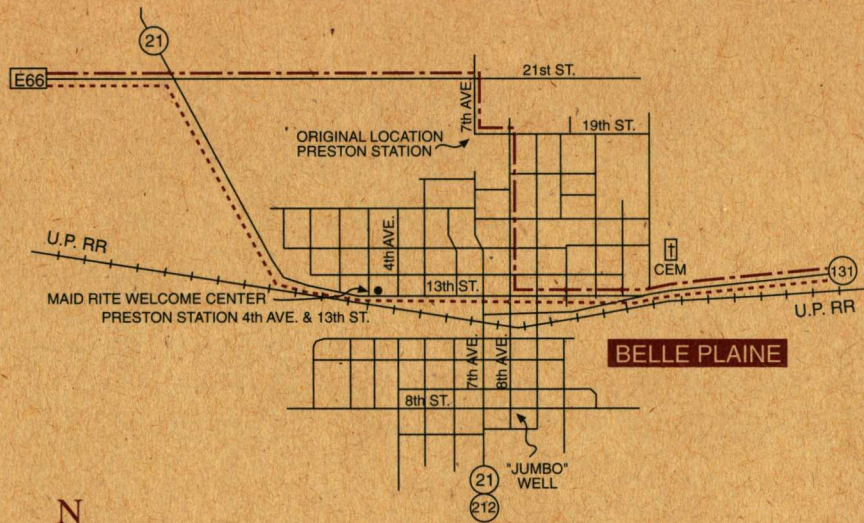
J. J. FERGUSON, Proprietor

American or European Plan  
Rates: \$2.00 American 50c European  
Catering to Tourist a specialty

Phone No. 137

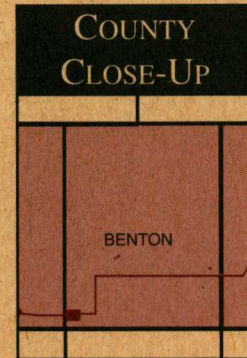
BELLE PLAINE, IOWA





**TOWN TO TOWN**  
 Belle Plaine-Chelsea 7m

LEGEND	
---	First Route
- - -	Second Route
—	Third Route
====	4-Lane
—	Local Road
⬡	U.S. Hwy.
⊙	Iowa Hwy.
⊠	County Hwy.
⊞	Interstate
XX	Closed





**WHAT TO SEE IN PRESENT DAY  
TAMA COUNTY**

The Lincoln turned south at Le Grand, probably to avoid some hill country.

**Chelsea**

Lighted Lincoln Highway Bridge  
Wood carver (Irish St.)  
Conway Feed ghost signs  
Dvorek Mtr. Co. building

**Gladstone**

(abandoned) (in 1916 Guide)  
East of Gladstone, the Lincoln turned south to follow the Iowa River Valley and to avoid the hills. US 30 was rebuilt to bypass Chelsea and Belle Plaine in the mid-1930's.

**Toledo**

(the other half of the Twin Cities)  
Tama County Courthouse, Jail (NRHP)  
County seat square & NRHP bldgs.  
1950's commercial architecture (US 30)

**Tama**

Lincoln Highway mural  
(3rd and Siegal)  
Lincoln Highway Bridge  
(5th St. E.) NRHP  
King Tower Cafe (US 30 east)

**Montour**

Two early service stations  
(not in use) (on LH)  
Burma Shave signs (E. LH)  
Osterman accident site (1/2 mile E.)  
Rubes Steakhouse

**Butlerville**

(abandoned)



*Top Photo: Postcard of one of the first "truck stops" in Iowa around the early 1940's. Photo Courtesy of Lyell Henery*

*Bottom Photo: Family of Elmer Times looking down the road at the Lincoln Highway gateway pillars on 13th St., in 1921.*

1924

**CORY & PITKA GARAGE**

Genuine Ford Parts  
**WRECKING SERVICE**

SERVICE - McQUAY-NORRIS BEARINGS

PISTON RINGS AND PISTONS

FREE ROAD MAPS OF IOWA

**TAMA, IOWA**

**TAMA, IOWA** greets the tourist with a beautiful Bathing Beach and Tourist Park, everything free, within two blocks of the business center of town. Electric lighted; good water and shade. A cordial welcome. Come and camp with us for a night or throughout the season. Hundreds throng our bathing during the hot weather-none better or safer in the West. Good hotels, restaurants and theatres. Prices to tourists same as to home-folk.  
The Mesquakie Indian Reservation adjoins the city on the west.

1924

**BUTLERVILLE**

Tama County. Post Office address "Montour". No tourist accommodations. L. H. Local Consul. Frank Lewis.

**MONTOUR**

Pop. 500 Tama County. One hotel, 3 garages, Local speed limit, 15 miles per hour, enforced. One bank, 1 railroad, 5 general business places, express company, telephone.  
L.H. Local Consul, J. M. Buchanan.

**TAMA**

Pop. 2,500. Alt. 827 feet. Tama County. On the Iowa River. Two hotels, 2 garages. Route marked through town and county. Two railroad crossings at grade. Two banks, 3 railroad, 50 general business places, 2 express companies, 1 telephone company, 2 newspapers, 2 public schools, electric lights, water works. Commercial Club. L. H. Country Consul, D. E. Goodell.  
Three miles west of here the Highway passes directly through the Sac and Fox Indian Settlement, the only settlement on the Lincoln Highway east of the Missouri River.  
The Indians settled here, coming from what is now Oklahoma, in 1855 and still cling to many of their habits as to dress and traditions.

**CHELSEA**

Pop. 600. Alt. 789 feet. Tama County. On the Iowa River. Two hotels, 1 garage. Local speed limit, 12 miles per hour, enforced. Two banks, C. & N. W. Railroad, 11 general business places, express company, 2 telephone companies. Good fishing and free camp grounds on Iowa River.  
L. H. Local Consuls, E. P. Willey and Homer Garden.