

"Millions of Acres" Advertisement, 1872

PRODUCTS WILL PAY FOR LAND AND IMPROVEMENTS!

MILLIONS OF ACRES

View on the Big Blue, between Camden and Crete, representing Valley and Rolling Prairie Land in Nebraska.



IOWA AND NEBRASKA LANDS

FOR SALE ON 10 YEARS CREDIT

BY THE

Burlington & Missouri River R.R. Co.

AT 6 PER CT. INTEREST AND LOW PRICES.

Only One-Seventh of Principal Due Annually, beginning Four Years after purchase.

20 PER CENT. DEDUCTED FROM 10 YEARS PRICE, FOR CASH.

LAND EXPLORING TICKETS SOLD

and Cost allowed in First Interest paid, on Land bought in 30 days from date of ticket.

Thus our Land Buyers ~~will~~ GET A FREE PASS in the State where the Land bought is located.

These TERMS are BETTER at \$5, than to pre-empt United States Land at \$2.50 per Acre.

EXTRAORDINARY INDUCEMENTS on FREIGHT and PASSAGE are AFFORDED TO PURCHASERS and THEIR FAMILIES.

Address **GEO. S. HARRIS, LAND COMMISSIONER,**
or **T. H. LEAVITT, Ass't Land Comm'r, Burlington, Iowa.**

Or apply to

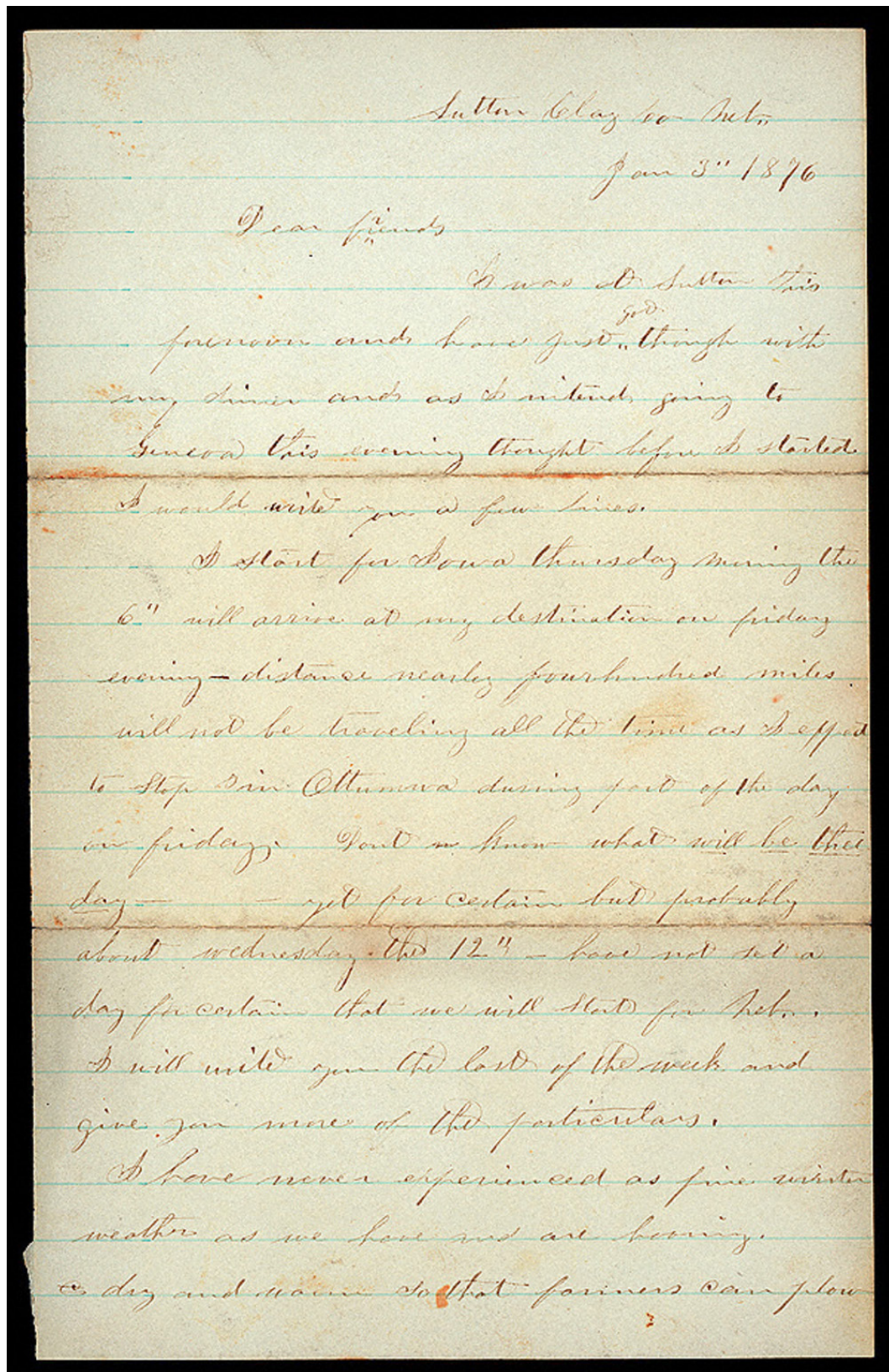
FREE ROOMS for buyers to board themselves are provided at Burlington and Lincoln.

CIRCULARS are supplied GRATIS for distribution in ORGANIZING COLONIES and to induce individuals to emigrate WEST.

A SECTIONAL MAP, showing exact location of our IOWA LANDS is sold for 30 Cents, and of NEBRASKA LANDS for 30 Cents.

COMMERCIAL ADVERTISER PRINTING HOUSE, BUFFALO, N. Y.

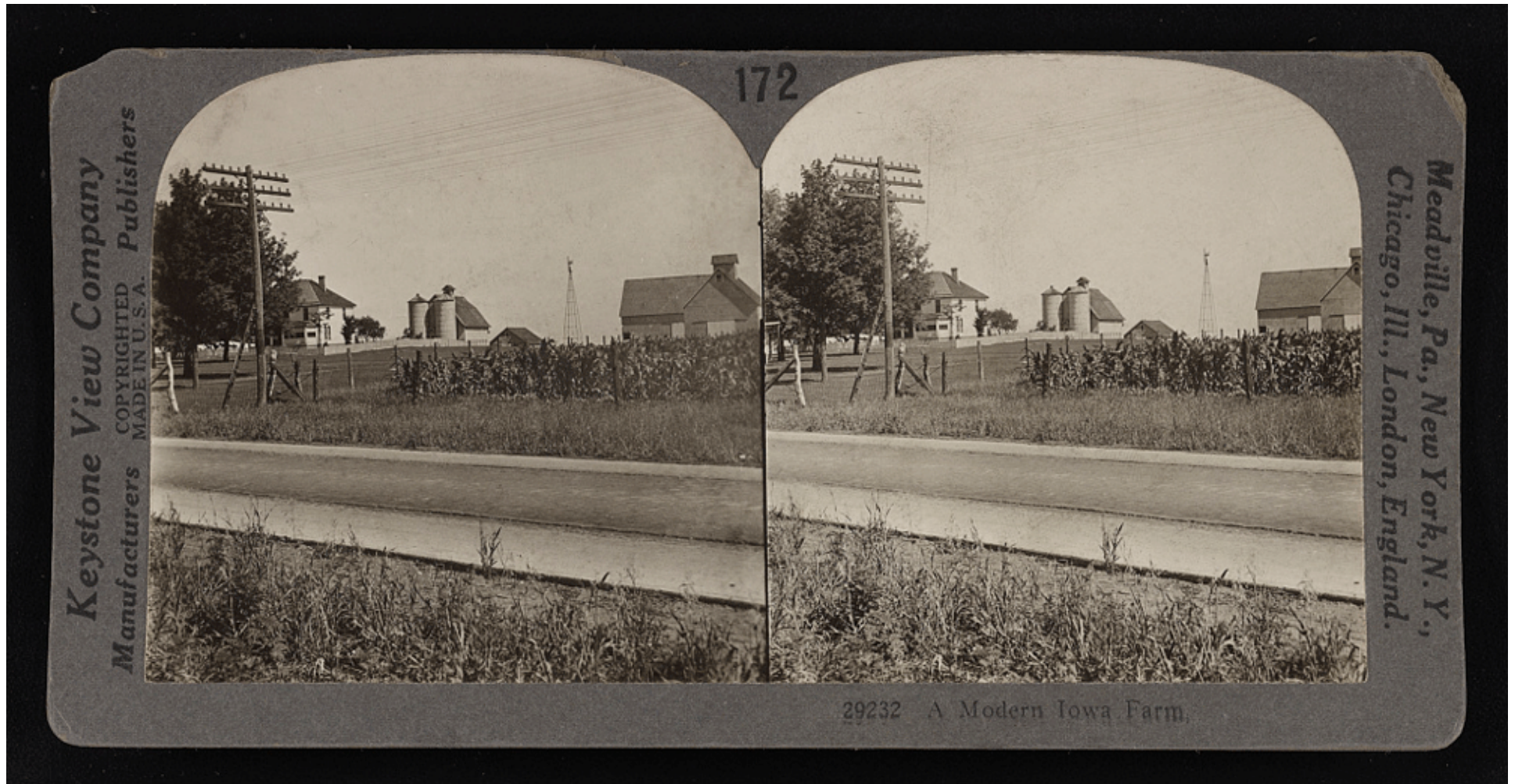
Letter from Giles S. Thomas to His Family, January 3, 1876 (pg.1)



Letter from Giles S. Thomas to His Family, January 3, 1876 (pg.2)

amongst
(Great success)
nearly every day if they wish. Plans were
being on the last and first of the old and
new years something that I have never seen
before. — has been one of the finest winters
for seeing threshing machines I ever seen.
Matt and Uriah went to church
yesterday and have not yet back yet
4 miles to the school house where the meeting
is — it will probably continue during the
week. Judge Blaine and a Mr. Massey
is doing the preaching. Mr. Where the
circuit preacher cannot be here as he
is having more work on other parts of the
work than he can do. I must stop as it is
going to keep me hurrying to get around as
I have between 40 and 45 miles to ride
and it is now but 15 minutes to two o'clock.
I also want to get around for church if possi-
ble. I will send this and the next letter to you.
As ever to all. G. S. Thomas

“A Modern Iowa Farm,” 1927



“A Modern Iowa Farm,” Keystone View Company, 1927. Courtesy of Library of Congress

Farmer Plowing Sod in Grundy County, Iowa, 1940



Vachon, John, "Untitled photo, possibly related to: Plowed sod, Grundy County, Iowa," 1940. Courtesy of Library of Congress

Plowed Sod in Grundy County, Iowa, 1940



Vachon, John, "Plowed Sod, Grundy County, Iowa," April 1940. Courtesy of Library of Congress

View of Top of Nevada Power Plant at Hoover Dam, Date Unknown



“Hoover Dam, Circuits 1-15, U.S. Highway 93, Boulder City, Clark County, NV,” Date Unknown. Courtesy of Library of Congress

"British Reported Set To Build World's First Nuclear Power Station" Newspaper Article, August 8, 1951

1A-36 • THE EVENING STAR, Washington, D. C.
FRIDAY, AUGUST 8, 1951

Large for Oriental and Domestic Rugs; Household Furniture of Every Description; Formal Office; China; Glassware; Brics-a-Brac; Radios; Phonographs; Lamps; Mirrors, etc.

AT PUBLIC AUCTION
of Slaves, 715 13th St.
FRIDAY
August 10th, Starting at 10 a.m.

Also at 1 p.m.—
 Solitaires, diamond rings, wedding rings, watches and other jewelry from the estate of Tracy L. Jeffords, Liberty National Bank Ex. Ex. the estate of Edward Larkin, Liberty National Bank, Ex.

Terms Cash.

C. G. HADAN & CO., INC., Auctioneers
 715 13th St., N.W.

Now YOU CAN OWN A SINGER SEWING MACHINE
REBUILT PORTABLE ELECTRIFIED

GUARANTEED FOR 5 YEARS!
MAINTAINED BY GUARANTEED PARTS

\$34.50
FREE!

PHONE NOW! "PAY AS YOU SEW"

ME. 5600
REDEMPTION CLEAN RITE
SEWING STORES

1225 STREET N.W.,
 WASHINGTON, D. C.

British Reported Set To Build World's First Nuclear Power Station

LONDON, Aug. 8.—The Daily Mail said today British atomic scientists are ready to begin building the world's first nuclear power station.

All that is needed to get the project under way, the newspaper said, is approval of a government grant of £900,000 (\$2.5 million) to begin construction of the plant.

The Mail said the project would be entirely independent of coal supplies which now produce almost all of Britain's power. The plant will be located at Harwell, headquarters of government atomic research work.

The Mail quoted the Supply Ministry, which handles Britain's atomic research, as saying: "The work will be completed this year. If successful, it will also foreshadow important advantages in the use of atomic energy for ship propulsion."

Research experts plan to use the atomic power plant at Harwell to provide energy to supply electricity for a housing center, the Mail said. It added that a full-scale experimental plant should be operating within about four years.

A week ago the government's scientific advisory council reported that development of British atomic power stations to any substantial degree "is likely to take a generation at least."

Retained War Plants Save Billions, O'Mahoney Says

WASHINGTON, Aug. 8.—Senator O'Mahoney, Democrat of Wyoming, said today that retention of World War II government plants and factories may have saved taxpayers more than \$2 billion.

O'Mahoney is chairman of the Senate Appropriations subcommittee handling legislation to sell off government property. He said that many of the plants and factories were in excellent condition and that the government could save billions of dollars by retaining them.

The Senator said "some 40 per cent of peak capacity for the production of munitions and chemical supplies for the army was retained after World War II."

The plants he added, originally cost \$2 billion.

Drug Flown From U. S. Helps Critically Ill Portuguese Girl

LEISBON, Portugal, Aug. 8.—A 9-year-old Portuguese girl suffering from spinal meningitis appeared yesterday after the first shipment of a drug flown from the United States yesterday in an effort to save her life.

Dr. Carlos Medina Resende, who was sent to Portugal to examine a neighbor, she was now in bed and near a death.

An atmosphere of hope was renewed in the small cottage in the seaside residential district of Leisbon, where the drug, available only on fumes, was received by grateful doctors.

Dr. Medina's father had received the aid of a radio amateur, through his friend for help. The message was picked up by a radio operator of the United States Navy.

The girl's mother said: "Now I can see the face of my daughter and know our prayers were answered—thanks to the generosity of the American people."

The attending doctor said it was his aim not to make any statement, but added: "I found the girl brighter at noon today." He said 18 more bottles of the drug were being sent.

Nuts Once Grew on Ferns

NEW YORK—Nuts, which today grow only on trees, a quarter of a billion years ago were borne on ferns.

Belgium's 1951 "year show" will be devoted to the theme of "Nuts from the Past."

Brussels attracted 300 exhibitors in the United States show will be devoted to the theme of "Nuts from the Past."

Hoover Says Red Menace Has Not Decreased in U. S.

SAN DIEGO, Calif., Aug. 8.—J. Edgar Hoover, chief of the Federal Bureau of Investigation, said today that the red menace in the United States has not decreased in the past year.

Hoover, who is in San Diego for a conference with the local police, said that the number of communists in the United States has not decreased.

The director of the Federal Bureau of Investigation said in an interview here today that the number of communists in the United States has not decreased.

Mr. Hoover, in California for an annual physical checkup, pointed out that top leaders had been convicted of conspiracy to overthrow the Government by force and that second level leaders were arrested last week.

Third level Communist leaders in the United States now will be rounded up, he added.

Nickel Makes Fine Tubing

CINCINNATI.—Pure nickel is as valuable as it can be today, said today the Nickel Institute, which is in the midst of a campaign to increase the use of nickel.

Nickel's use in tubing, but produces better corrosion and strength.

PORCHES
RUCKER LUMBER
 1100 17th St., N.W.
 Phone 8-1234

British Reported Set To Build World's First Nuclear Power Station

By the Associated Press

LONDON, Aug. 8.—The Daily Mail said today British atomic scientists are ready to begin building the world's first nuclear power station.

All that is needed to get the project under way, the newspaper said, is approval of a government grant of £900,000 (\$2.5 million) to begin construction of the plant.

The Mail said the project would be entirely independent of coal supplies which now produce almost all of Britain's power. The plant will be located at Harwell, headquarters of government atomic research work.

The Mail quoted the Supply Ministry, which handles Britain's atomic research, as saying: "The work . . . will be conclusive this year. If successful, it will also foreshadow important advantages in the use of atomic energy for ship propulsion."

Research experts plan to use the atomic power plant at Harwell to provide energy to supply electricity for a housing center there, the Mail said. It added that a full-scale experimental plant should be operating within about four years.

A week ago the government's scientific advisory council reported that development of British atomic power stations to any substantial degree "is likely to take a generation at least."

House & Herrmann's 66th August Sale

TABLES

1/2 Off AND MORE

A Sea of Tables . . . House & Herrmann rallies one Complete Floor with hundreds of them—Decorated to team with every scheme . . . for every occasion! Name a style—Lamp, End, Cocktail, Pembroke, Drum, Book, Tier . . . we've got it! Name a period—Provincial, Traditional, Modern . . . we've got it! Name a wood or a finish—Mahogany (some with tooled leather tops!) Swirl Mahogany, Blond Mahogany, Lined Oak, Walnut, Maple . . . we've got it, too! **SAVE AT LEAST ONE-HALF . . . even more if you shop early!** Some are one-of-a-kind, some floor samples, so DASH IN for Tip-Top Selection! Now Priced From

\$9.95 TO \$64.95

Convenient Terms Arranged

* OPEN THURSDAY NIGHT UNTIL 9 *

House & Herrmann

7th AND EYE STREETS

DOWNTOWN STORE HOURS
 Open Thursday Night 'til 9—Friday 9 to 6
 Closed Every Saturday During August

SILVER SPRING STORE HOURS
 8435 Georgia Avenue
 Open Monday Through Friday 'til 9 P.M.—Saturday 'til 6

Farm in Hardin County, Iowa, August 18, 2008



Highsmith, Carol M., "Farm Scene Including a Bright-Red Barn, Three Silos (one vintage, two modern), and Quite Modern Wind Turbines in Hardin County, Iowa," 18 August 2008. Courtesy of Library of Congress

View of Eagle Butte Coal Mine in Gillette, Wyoming, August 20, 2008



Highsmith, Carol M., "View into the Eagle Butte coal mine in Gillette, in Wyoming's Powder River Basin," 20 August 2008. Courtesy of Library of Congress

Nuclear Power Plant in Northern California, 2012



Highsmith, Carol M., "Nuclear Power Plant in Northern California," 2012. Courtesy of Library of Congress

“Preserve Your Forests from Destruction” Illustration, January 9, 1884



Keppler, Joseph Ferdinand, "Preserve your forests from destruction, and protect your country from floods and drought," 9 January 1884.
Courtesy of Library of Congress

"Farm Wells and Pollution" Newspaper Article, February 25, 1916

Farm and Garden

FARM WELLS AND POLLUTION.

Clean Water an Important Consideration on Every Farm.
(Prepared by United States Department of Agriculture.)

Perhaps the most important consideration in connection with the farm water supply is to get clean water. It has often been considered that clean water was clean water and that clean water must be clear. Neither one of these conditions is necessarily true. Water may be visibly polluted and at the same time be beautifully clear and sparkling. It may be clear and yet contain the terrible and deadly germs of typhoid fever or other intestinal



OLD TIME FARM WELL.

disorders. It may also contain considerable poisonous matter in solution. A polluted water supply is evidence of the existence of bad sanitary conditions, which is of the utmost importance to remedy. On the other hand, many waters that are not clear cannot be regarded as unclean, and their use is perfectly safe. Many surface waters have a greenish or brownish tint from vegetable stains and mineral waters frequently contain more or less color to varying degrees. In some cases such waters have proved to be decidedly beneficial. With the growth of population and development of industries there is progressive pollution of streams, so that in the more thickly settled regions streams are already contaminated, and subject to pollution are very rare. Surface water supplies from small streams should never be used for household purposes unless no other supply is available. In the event that it must be used such water should be clear and should be thoroughly boiled.

The well is the most commonly used source of farm water supply. It may be a shallow dug or driven well or a deep dug or bored well. It may be said, however, that the majority of shallow dug wells on farms where contamination is present are contaminated.

The government sanitary engineers offer the following practical suggestions for keeping different types of wells, especially shallow wells, free from needless pollution:

Obviously the logical first step is to secure a clean well water supply on the farm or anywhere else is to remove at the source of possible contamination. Among the worst of these are the open privy vault, the leaching cesspool and barnyard filth. A well in ordinary proximity to these sources of contamination will be polluted. Even though the well is located higher than ground than these sources of contamination, heavy rainwater may carry them into the ground water level that it will be the most of contamination and thus pollute the well. It is evident, therefore, that the open privy vault and leaching cesspool should be discarded and a sewage purification system or at least a sanitary privy be substituted. Sewage, garbage, manure or other waste should never be dumped into the ground, but should be certainly never into old abandoned wells. An old well used for this purpose is very likely to communicate directly with the water bearing stratum from which other wells in the immediate vicinity draw their supply. Shallow waste water should never be thrown out of the back door or window on to the ground. If the pigs and chickens must run at large they should at least be kept away from the well. A box built around the pump and filled with straw in winter is an extremely unsafe way to prevent the pump from freezing.

Concrete manure pits, impervious floors and water tight drains are desirable features for farm buildings. If these are located the farmer's manure the manure pits should be placed a safe distance away from the well.

The well itself should be located as high as possible with respect to buildings, stock pens and chicken yards and as far away from all sources of contamination as convenience and local surroundings will permit.

To Create a Vacuum.

If you have ever worked in a physics laboratory you probably have seen vacuum receiver and learned how difficult it is to create a perfect vacuum even with this instrument.

A vacuum can be created in a simple way by using two drinking glasses, a small candle and a piece of thin paper. The glasses must be the same size and of the same glass. The candle end is lighted and put into the glass. The thin paper is well dampened and placed on top of the glass. The other glass is inverted and its rim pressed closely over the lower one and pressed down tightly. The candle will burn up all the oxygen in the glass and go out.

The air in the glass, being heated, will expand, and some of it will be forced out from under the lower glass. Then as the portion remaining cools it will contract and draw the upper glass on the paper and create an air tight seal. The upper glass can be taken up and the lower will cling to it.—Kansas City Journal.

Catch of a Bullet.

That bullet neither white, blue, nor even white, according to the contrary notwithstanding, is in accordance with the statement given by Edward C. Crossman in Oetting. With one possible exception when in certain conditions of open country modern military bullets show in these striking lack of the following—nothing is visible except a very small of air about the bullet's base when it travels at high speed. At a velocity of 1,200 feet a second, or more, the color is "the same as much as a long and very thin, slightly curved, blackish white." Those who stand far enough from the line hear the bullet's crack and later the dull, thudding noise of the rifle itself, which has been outburst. Jack London makes a rather bit at 800 yard range first hear the sound of the mud and rifle and then feel the blow of the bullet. But the bullet would have killed him half a second before the sound from the rifle reached him.

Beaten on Sea Power.

It was Francis Bacon, after the ships of England had destroyed "the" in the Turkish armada, who in a chapter entitled "Of the True Greatness of Kingdoms and Estates," proclaimed this that no power is world power. He said:

One of the great effects of that battle by sea, the battle of Arden, which the English of the world, the battle of Lepanto, destroyed the greatness of the Turks. There is many a lesson, when sea power has been beaten, that is to be learned. But when sea power is beaten, it is not the end of the world. It is only a lesson to be learned. It is only a lesson to be learned. It is only a lesson to be learned.

Why is the Sky Blue?

When a piece of iron is slowly heated in a furnace, the first color seen is blue and as the frequency of the waves goes on becoming greater it passes through red, orange, yellow and finally white. The blue rays are scattered by suspended particles in the air, the blue rays are scattered more than the others and give a blue appearance to the otherwise colorless sky.—James K. Slatton, B. S., in "Chemistry of Familiar Things."

Domestic Diplomat.

Mrs. Constance Bled is the country "Why do you build on your own grounds, according to the law?" a friend asked her one day.

"Well, I have had some experience with these modern girls," replied Mrs. C. "Previously I used to expect them Mondays, but now I get them to come Saturdays."

"But what?" asked her neighbor.

"There's no train back to the city until Monday afternoon," said Mrs. C. "So I must build on Saturdays. I don't know why I don't build on Saturdays."

Finishing the Leap.

The old colored man had climbed into the dentist's chair of fortune. "What I give you, my dear son, as you" quoted the tooth extractor.

"But on after de land an out, here," replied the old man. "Heckin maddy Ah feel me 'ah better dose."

Beyond Him.

How something—When we are used to do must have to move from each other. You must tell me everything. He replied—But—well, I don't know anything—Puck.

Association.

"That heavy rock feels like such a heavy burden." "Of course. Don't you know they made their money in starch?"—Halt me, America.

Shaving.

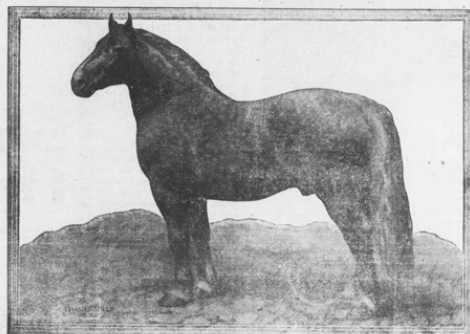
Shaving was introduced among the Indians by the Spaniards. The first shave was done by the Spaniards. The first shave was done by the Spaniards. The first shave was done by the Spaniards.

Boys and Pests.

Boys are pests. They used to be stoned and pelted before they were made their mark.—Youth's Companion.

SPRING IS HERE

Have you given any thought as yet to those Horse Bills you will need within the next few weeks?



We have several good cuts and can get others to suit your need within a few days.



We are prepared to print Horse Bills on short notice on the best of paper or cardboard and at prices as low as quality of work and material will permit. Bring in your order before the season opens.

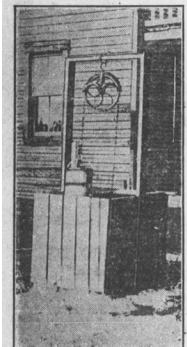
The CHRONICLE.

Farm and Garden

FARM WELLS AND POLLUTION.

Clean Water an Important Consideration on Every Farm.
(Prepared by United States Department of Agriculture.)

Perhaps the most important consideration in connection with the farm water supply is to get clean water. It has often been considered that clean water was clean water and that clean water must be clear. Neither one of these conditions is necessarily true. Water may be visibly polluted and at the same time be beautifully clear and sparkling. It may be clear and yet contain the terrible and deadly germs of typhoid fever or other intestinal



OLD TIME FARM WELL.

disorders. It may also contain considerable poisonous matter in solution. A polluted water supply is evidence of the existence of bad sanitary conditions, which is of the utmost importance to remedy. On the other hand, many waters that are not clear cannot be regarded as unclean, and their use is perfectly safe. Many surface waters have a greenish or brownish tint from vegetable stains and mineral waters frequently contain more or less color to varying degrees. In some cases such waters have proved to be decidedly beneficial. With the growth of population and development of industries there is progressive pollution of streams, so that in the more thickly settled regions streams are already contaminated, and subject to pollution are very rare. Surface water supplies from small streams should never be used for household purposes unless no other supply is available. In the event that it must be used such water should be clear and should be thoroughly boiled.

The well is the most commonly used source of farm water supply. It may be a shallow dug or driven well or a deep dug or bored well. It may be said, however, that the majority of shallow dug wells on farms where contamination is present are contaminated.

The government sanitary engineers offer the following practical suggestions for keeping different types of wells, especially shallow wells, free from needless pollution:

Obviously the logical first step is to secure a clean well water supply on the farm or anywhere else is to remove at the source of possible contamination. Among the worst of these are the open privy vault, the leaching cesspool and barnyard filth. A well in ordinary proximity to these sources of contamination will be polluted. Even though the well is located on higher ground than these sources of contamination, heavy rainwater may carry them into the ground water level that it will be the most of contamination and thus pollute the well. It is evident, therefore, that the open privy vault and leaching cesspool should be discarded and a sewage purification system or at least a sanitary privy be substituted. Sewage, garbage, manure or other waste should never be dumped into the ground, but should be certainly never into old abandoned wells. An old well used for this purpose is very likely to communicate directly with the water bearing stratum from which other wells in the immediate vicinity draw their supply. Shallow waste water should never be thrown out of the back door or window on to the ground. If the pigs and chickens must run at large they should at least be kept away from the well. A box built around the pump and filled with straw in winter is an extremely unsafe way to prevent the pump from freezing.

Concrete manure pits, impervious floors and water tight drains are desirable features for farm buildings. If these are beyond the farmer's power the manure pits should be placed a safe distance away from the well.

The well itself should be located as high as possible with respect to buildings, stock pens and chicken yards and as far away from all sources of contamination as convenience and local surroundings will permit.

"Deforestation Means Famine in U.S." Newspaper Article, May 23, 1921

TWENTY-FOUR

THE TIMES: MONDAY, MAY 23, 1921

DEFORESTATION MEANS FAMINE IN U. S.

Washington, May 23.—Future generations of Americans may face famine conditions, such as are now existing in China, if the present rate of deforestation in this country continues unchecked, according to a report issued by the Department of Agriculture.

SUBURBAN DAY

25% OFF ON

Fishing Tackle

Tennis Shoes

\$1.25 Child's.....\$.85

1.45 Youth's.....1.00

1.75 Boys'.....1.35

1.95 Mens'.....1.50

25% ON

BASEBALL GOODS

10% ON

Tires and

Tubes

20% ON

AUTO ACCESSORIES

Alling Rubber Co.

38 Fairfield Ave.

PIGGLY WIGGLY

All Over the World

Campbell's Soup can	10c	Brookfield Butter, 1 lb. Carton	38c
Summit Tomatoes No. 2 can	8c	Libby's Baked Beans, No. 2 can	8c
Libby's Catsup 9 ounce bot.	12c	Bell Boy Coffee 1 lb. Package	17c
Pillsbury's Flour 34 1-2 lb. Sack	\$1.29	Quaker Quakes Package	7c

Tuesday, America's New Fish Day

A Few Real Specials For

Tuesday, May 24, 1921

Large, Fancy, Fresh Caught Mackerel	18c lb.
Porgies	10c lb.
Haddock	7c lb.
Steak Cod	15c lb.
Live Lobsters, small	35c lb.
Live Lobsters, large	38c lb.

THE HAYES FISH CO.

200 FAIRFIELD AVE.

Dealers in All Kinds of Fresh Fish, Meats, Vegetables and Groceries

Tel. Bar. 412-413-2697.

Tuesday, America's New Fish Day

FOR Suburban Day 20% off

on our entire stock of high quality jewelry.

Buechler's JEWELRY

NOBLE 216

38 Fairfield Ave.

HEALTH

From Your Light Socket

The mighty forces of electricity are harnessed in a health-giving administration, pleasant and safe as sunshine—yet powerfully effective.

We believe the manufacturers may be pardoned for taking pride in having designed and produced the Remitté Violet Ray, an apparatus for self-treatment, procurable at a price within the reach of all.

Persistent daily application will often accomplish in chronic cases more satisfactory results than less often applications given by a specialist with the most expensive apparatus.

GET A DEMONSTRATION May 23rd to June 1st, 1921.

American Hardware Stores

INCORPORATED

Fairfield Ave. and Middle St.

"All That is Hardware—And More."

PERSONALS

Mr. Vincent Weaver of Cottage Grove, Wis., who is visiting relatives here, will visit relatives here.

Members of the Chapter Club will meet tomorrow evening at the home of Miss Grace Kinney of Warren street.

An important meeting of the Bridgeport Business and Professional Women's club will be held this evening at 7:30 o'clock in their rooms on the Library building. Definite plans will be discussed in regard to the purchasing of their new home on Washington avenue.

Mr. Howard Shannon of Kew-Forest spent the week-end in Kew-Forest, N. Y., visiting relatives.

Mr. Henry Marchant of Elm street, Bridgeport, is visiting her parents in Stamford, for several days.

Over 50 table reservations have been made for the benefit card party to be given at the home of Mrs. Richard Howell of Elm street, Bridgeport, on Wednesday evening for the children.

This affair is being given for the benefit of the Kew-Forest Public School. Tickets are \$1.00 each.

Each table. The committee in charge includes: Mrs. J. W. Hartley, Mrs. Charles D. Williams, Mrs. Harriet Bradstreet, Mrs. Walter Goodrich, Mrs. Joseph Fanning, Mrs. T. J. Jarvis and Mrs. Howell.

Seaside Scuttles Ship.

Menagerie Ark in Port.

Steamer, May 23.—Rivalling Nook, Ark, the British steamer, left New York in port, with a huge menagerie of birds and beasts.

The only difference between the Ark and the Ark is that the animals on the Ark are not "two by two."

For instance, there is only one elephant, but to balance that there are four tigers, a number of leopards and a lion.

Thirty makes of various automobiles and four or five hundred and fifty of the latest models of automobiles and motorcycles down the line to the City street.

Most of the monkeys, however, are to be used in certain pathological experiments.

Yesterday was the warmest May 23 in 47 years. The temperature reached 79 degrees.

Charles H. Brown, 69 years old, of 1113 Yale avenue, died suddenly on Sunday.

His death was due to heart failure.

Suburban Day Sale, May 24th '21

Meat Department

Choice Shoulder Steak (Cut from good steer beef) 14c lb., 4 lbs. for 50c.	Small Lean Skinned Back 29c lb.	Hams 29c lb.
Fat Salt Pork 12 1-2c lb.	Gotham Brand Bacon 20c lb.	Clover Leaf Bacon 15c lb.
Corned Plate Beef 6c lb.	Corned Rump Butts 12c lb.	
Home Made Bread 10c large loaf, small loaves 7c		
Pea Beans, Medium, 6c lb., 5 lbs. for 25c	New White Kidney Beans, 6c lb., 5 lbs. for 25c	
Cranberry Beans, 4c lb., 8 lbs. for 25c	Reckless Lima Beans, 6c lb., 5 lbs. for 25c	
Jap. Green Peas, 6c lb., 5 lbs. for 25c	Green Split Peas, 9c lb., 3 lbs. 25c	
Yellow Split Peas, 7c lb., 3 lbs. for 20c		
Seedless Raisins, ungraded, 22c lb., 5 lbs. for \$1.00, 25 lb. boxes \$4.75		
Broken Walnut Meats 59c lb.	California Sardines in tomato sauce, 13c, to 2 for 25c	
Walnut Meats, halves 69c lb.	Pink Alaska Salmon, 1 lb. tall can 13c, 2 cans 25c for 90c.	
	Mt. Hamilton Sliced Peaches, large cans, regular 35c value, can 25c, 4 for 95c (In heavy Syrup)	

Big Tea and Coffee Special for Suburban Day

Our Regular 29c Ceylon Mixed or Formosa Tea 25c lb., 4 lbs. for 95c	Our best Maricao Coffee, regular price 32c, special 25c, 4 lbs. for 95c.
Our 49c grade Ceylon, Mixed or Formosa 39c lb., 4 lbs. for \$1.40	Our 25c coffee special 19c, 5 lbs. for 95c.
Fresh Caught Bloater Mackerel 20c lb.	
4 lbs. Fancy Head Rice for 25c	Purity Cocoa, large cans 29c
5 lbs. Rolled Oats for 25c	8 lbs. Yellow Granulated Meal for 25c
144 boxes Safety Matches for 89c	Bulk Cocoa 10c lb.
Broken Macaroni and Spaghetti 10c lb.	Lenox Soap, large cakes 6 for 25c
Rumford Baking Powder, large cans 29c	5 lbs. Old Fashioned Buckwheat 25c
Davis Baking Powder, large cans 19c	Royal Baking Powder, large cans 39c
Magnolia Condensed Milk can 16c, 3 for 45c	Purity Baking Powder, large cans 15c
Kellogg's Corn Flakes, pkg. 10c	Challenge Condensed Milk can 16c, 3 for 45c
Evaporated Milk, tall cans 10c, doz. \$1.15, case 4 doz. \$4.50 (compound)	Van Camps Salad Dressing, bottle 17c

3 for 50c, large bottles 30c.

Fruits

Navel Oranges, dozen 25c	Lemons 20c doz.
Large Navel Oranges 35c doz.	Grape Fruit 12c each
	Pineapples, large fruit 30c each

Special Bargains in all departments for Suburban Day

Colgate Company will give away free a regular size package of Washing Powder with every purchase of Octagon Soap, Soap Chips and Cleanser.

SUNSHINE BISCUIT COMPANY

Takoma Biscuits 3 for 20c

Orange Blossoms 25c lb.

Boss Milk Crackers 18c lb., 2 lbs. for 35c

Almond Macaroons 27c lb., 2 lbs. for 50c

BRIDGEPORT PUBLIC MARKET

AND BRANCH

STATE & BANK ST. E. MAIN STREET, PHONES.

If Only For A Friendly Chat—Stop Here

SUBURBAN DAY

We want to see all our old friends—and we want to make a lot of new ones. To this end we are giving the following discounts:

10% Off On All Cash Sales

OR

5% Off On All Charge Sales

Discounts apply to all items, with the exception of Mill Supplies and just a few restricted articles.

American Hardware Stores

INCORPORATED

Fairfield Avenue and Middle Street—Bridgeport, Conn.

"All That is Hardware—And More"

CARTWRIGHT'S

282 MAIN STREET ESTABLISHED 1856 WATSON BANK BUILDING CORNER JOHN ST.

SUBURBAN DAY SPECIALS

Men's Tan and Black Lace Shoes—Goodyear Welt	Men's Heavy Working Shoes—Double Sole
Were \$5.00 and \$5.50	NOW \$4.00
Men's Tan Scout Shoes—Solid Leather Sole and Heel	Were \$3.75 and \$4.00
NOW \$3.00	
Boys' Scout Shoes, \$2.50—Little Girls' Scout Shoes, \$2.00	Women's Grey, Black and Brown Strap Pumps
Were \$7.50	NOW \$5.00
Women's Tan and Black Oxfords—Guthrie Rubber Heel	Were \$4.50 and \$5.00
NOW \$3.50	
Children's Shoes, \$1.25, \$1.50, \$2.00 to \$3.50	(According to Size)

"KIDS" FOR THE ENTIRE FAMILY

Bargains in Canvas Footwear. See our window display

Dubuque “Shacktown” Near the Banks of a Polluted Stream, April 1940



Vachon, John, “Shacktown runs along the banks of a polluted stream, Dubuque, Iowa,” April 1940. Courtesy of Library of Congress

“Results of Deforestation” in San Juan County, Colorado, September 1940



Lee, Russell, “Results of deforestation during the early mining days. San Juan County, Colorado,” September 1940. Courtesy of Library of Congress