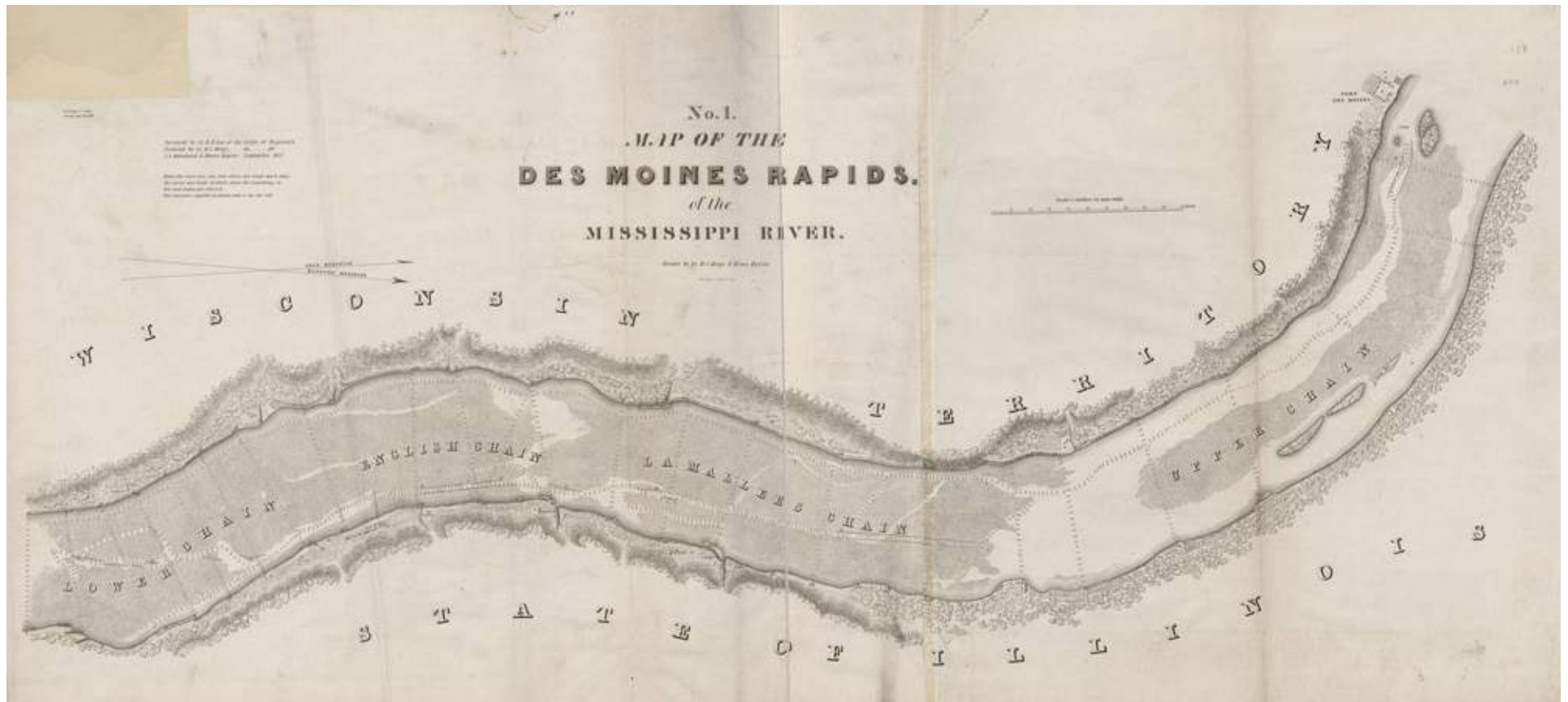


Iowa and Wisconsin Territories Map, 1842



Morse, Sidney E., Samuel Breese, and Harper & Brothers, "Iowa and Wisconsin," *Morse's North American Atlas*, pp. 33, 1842. Courtesy of Library of Congress

Des Moines Rapids of the Mississippi River Map, 1843



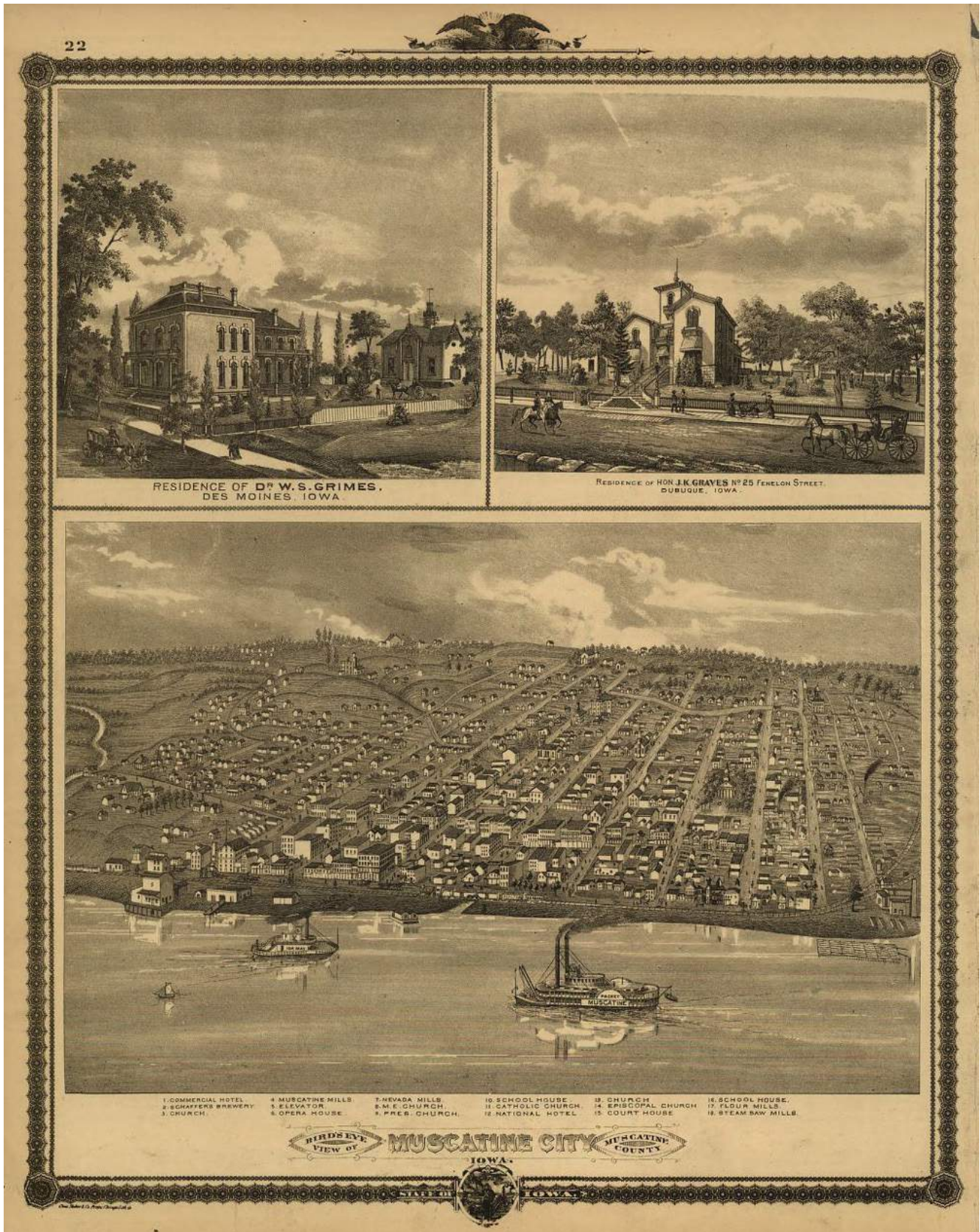
"No. 1 Map of the Des Moines Rapids of the Mississippi River," *Collection of Maps, Charts, Drawings, Surveys, Etc., Published from Time to Time, By Order of the Two Houses of Congress*, pp. 187, 1843. Courtesy of Library of Congress

Bird's-Eye View of Council Bluffs in Pottawattamie County, Iowa, 1868

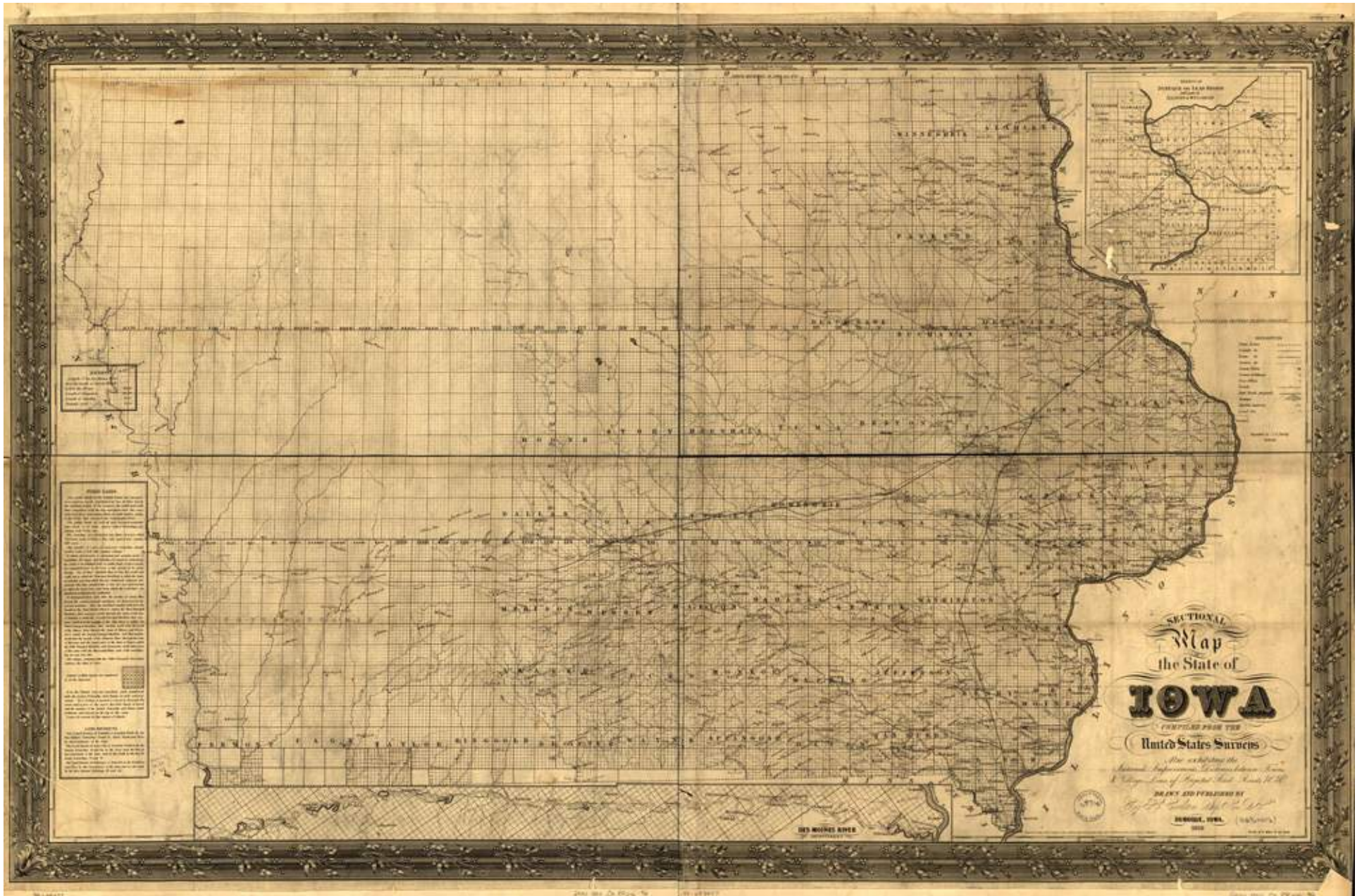


Ruger, A., "Bird's eye view of the city of Council Bluffs, Pottawattamie Co., Iowa," 1868. Courtesy of Library of Congress

“Illustrated Historical Atlas of the State of Iowa,” 1875



Sectional Map of Iowa, 1850



Carleton, Guy H., "Sectional Map of the State of Iowa," 1850. Courtesy of Library of Congress

Population in Iowa in 1850 and 1860 U.S. Censuses, 1853/1864 (pg.1)

TABLE II.—POPULATION BY SUBDIVISIONS OF COUNTIES.*

1.—APPANOOSE COUNTY.

* Cities, towns, townships, districts, parishes, precincts, wards, hundreds, &c.	WHITES.			FREE COLORED.			AGGREGATE POPULATION.
	M.	F.	Total.	M.	F.	Total.	
Caldwell	153	150	303				303
Centre No. 1.....	242	231	473				473
No. 2.....	106	77	183				183
No. 3.....	226	190	416				416
No. 4.....	37	28	65				65
Chariton	124	88	212				212

* No other counties are given in subdivisions by the marshals, and the subdivisions do not always make up the total of the county.

Population in Iowa in 1850 and 1860 U.S. Censuses, 1853/1864 (pg.2)

944

CENSUS OF 1850.

TABLE II.—POPULATION BY SUBDIVISIONS OF COUNTIES—Continued.

APPANOOSE COUNTY—Continued.							
Cities, towns, townships, districts, parishes, precincts, wards, hundreds, &c.	WHITES.			FREE COLORED.			AGGREGATE POPULATION.
	M.	F.	Total.	M.	F.	Total.	
Independence.....	89	87	176	1	1	177
Shoal.....	81	69	150	150
Taylor.....	134	109	243	243
Union.....	133	128	266	266
Washington.....	201	181	382	382
Wells.....	124	131	255	4	2	6	261
Total.....	1,655	1,469	3,124	4	3	7	3,131
2.—CEDAR COUNTY.							
Centre.....	519	462	981	981
Tipton.....	145	107	252	252
Iowa.....	289	247	546	546
Linn.....	220	194	414	414
Pioneer.....	244	175	419	419
Rochester.....	541	472	1,013	1	1	2	1,015
Springfield.....	172	142	314	314
Total.....	2,140	1,799	3,939	1	1	2	3,941
3.—CLAYTON COUNTY.							
Boardman.....	213	163	376	1	1	377
Farmersburg.....	135	106	241	241
Garnaville.....	399	314	713	1	1	714
Jefferson.....	312	234	546	546
Lodomillo.....	158	115	273	273
Malary.....	170	152	322	322
Mendon.....	192	163	355	355
Millville.....	168	135	303	303
Monoma.....	174	158	332	332
Sperry.....	116	94	210	210
Volga.....	120	90	210	210
Total.....	2,147	1,724	3,871	1	1	2	3,873
4.—CLINTON COUNTY.							
Bloomfield.....	236	213	449	449
Camanche.....	234	201	435	10	0	10	454
Deep Creek.....	66	66	132	132
De Witt.....	229	230	459	459
Elk River.....	228	197	425	1	1	426
Liberty.....	110	105	215	215
Lyons.....	244	209	453	453
Olive.....	46	39	85	85
Spring Rock.....	48	51	99	99
Union.....	33	17	50	50
Total.....	1,474	1,323	2,802	10	10	20	2,822
5.—DAVIS COUNTY.							
Bloomfield.....	349	337	686	686
Bloomfield.....	154	133	287	287
Drakesville.....	54	54	108	108
Fabus.....	212	215	427	427
Grove.....	371	306	677	677
Lick Creek.....	242	207	449	2	5	7	456
Total.....	273	269	547	2	5	7	547

“Table II: Population by Subdivisions of Counties,” The Seventh Census of the United States, 1853.
Courtesy of U.S. Census

Population in Iowa in 1850 and 1860 U.S. Censuses, 1853/1864 (pg.3)

STATISTICS OF IOWA.

945

TABLE II.—POPULATION BY SUBDIVISIONS OF COUNTIES—Continued.

DAVIS COUNTY—Continued.							
Cities, towns, townships, districts, parishes, precincts, wards, hundreds, &c.	WHITES.			FREE COLORED.			AGGREGATE POPULATION.
	M.	F.	Total.	M.	F.	Total.	
Marion.....	248	198	446				446
Perry.....	357	319	676				676
Prairie.....	211	158	369				369
Salt Creek.....	360	366	726				726
Soap Creek.....	277	256	533				533
Union.....	384	340	724				724
Wyaconda.....	320	282	602				602
Total.....	3,817	3,440	7,257	2	5	7	7,264

6.—DES MOINES COUNTY.							
Augusta.....	257	239	496				496
Benton.....	348	301	649	1		1	650
Burlington.....	657	562	1,219				1,219
Burlington city—							
1st ward.....	635	609	1,244		1	1	1,245
2d ward.....	614	428	1,042	11	7	18	1,060
3d ward.....	973	801	1,774	1	2	3	1,777
Total Burlington.....	2,222	1,838	4,060	12	10	22	4,082
Danville.....	564	523	1,087				1,087
Flint River.....	468	411	879				869
Franklin.....	597	509	1,106				1,106
Huron.....	316	281	597				597
Pleasant Grove.....	419	383	802				802
Union.....	585	532	1,117		2	2	1,119
Yellow Springs.....	502	459	961				961
Total.....	6,925	6,038	12,963	13	12	25	12,988

7.—DU BUQUE COUNTY.							
Du Buque.....	1,598	1,483	3,081	16	11	27	3,108

8.—HENRY COUNTY.							
Baltimore.....	285	268	553				553
Centre.....	430	407	837				837
Jackson.....	297	257	554	1		1	555
Jefferson.....	399	359	758				758
Marion.....	248	246	494				494
Mount Pleasant.....	380	377	757		1	1	758
New London.....	727	630	1,357		1	1	1,358
Salem.....	753	656	1,409	4	5	9	1,418
Tippecanoe.....	417	358	775				775
Trenton.....	512	488	1,000				1,000
Wayne.....	97	104	201				201
Total.....	4,545	4,150	8,695	5	7	12	8,707

9.—IOWA COUNTY.							
Brush Run.....	58	55	113				113
English River.....	70	71	141		1	1	142
Green.....	92	89	181				181
Marengo.....	158	178	336				336
Marengo.....	31	19	50				50
Total.....	409	412	821		1	1	822

“Table II: Population by Subdivisions of Counties,” The Seventh Census of the United States, 1853. Courtesy of U.S. Census

Population in Iowa in 1850 and 1860 U.S. Censuses, 1853/1864 (pg.4)

946

CENSUS OF 1850.

TABLE II.—POPULATION BY SUBDIVISIONS OF COUNTIES—Continued.

10.—JACKSON COUNTY.							
Cities, towns, townships, districts, parishes, precincts, wards, hundreds, &c.	WHITES.			FREE COLORED.			AGGREGATE POPULATION.
	M.	F.	Total.	M.	F.	Total.	
Andrew.....	83	85	168				168
Belleview.....	387	322	709	2	5	7	716
Belleview.....	196	166	362				362
Branden.....	191	153	374				374
Bridgeport.....	22	20	42				42
Butler.....	236	182	418				418
Canton.....	88	80	168				168
Fairfield.....	118	92	210				210
Farmers' Crook.....	246	216	462				462
Jackson.....	108	100	208		2	2	210
Jerry.....	20	22	42				42
Lowell.....	41	43	84				84
Maywaketa.....	171	165	336				336
Maywaketa.....	84	84	168				168
Monmouth.....	166	128	294				294
Otter Creek.....	135	107	242				242
Perry.....	230	190	420				420
Prairie Spring.....	113	87	200				200
Richland.....	206	172	378				378
Sabula.....	82	86	168				168
South Fork.....	240	222	462				462
Tote Des Mort.....	320	252	572				572
Union.....	222	198	420				420
Van Buren.....	150	144	294				294
Total.....	3,855	3,346	7,201	2	7	9	7,210

11.—JEFFERSON COUNTY.							
	M.	F.	Total.	M.	F.	Total.	AGGREGATE POPULATION.
Black Hawk.....	161	161	322				322
Cedar.....	320	310	630				630
Des Moines.....	471	515	986				986
Fairfield.....	479	511	990				990
Fairfield.....	445	464	909				909
Liberty.....	623	586	1,209				1,209
Lockridge.....	517	464	981				981
Locust Grove.....	455	449	904				904
Penn.....	456	413	869				869
Polk.....	307	294	601				601
Round Prairie.....	399	386	785	1		1	786
Walnut.....	351	366	717				717
Total.....	4,984	4,919	9,903	1		1	9,904

12.—JOHNSON COUNTY.							
	M.	F.	Total.	M.	F.	Total.	AGGREGATE POPULATION.
Big Grove.....	192	190	382				382
Cedar.....	78	67	145				145
Clear Creek.....	77	89	166				166
Iowa City (township).....	173	159	332				332
Iowa City.....	629	607	1,236	6	8	14	1,250
Liberty.....	195	186	381	1		1	382
Monroe.....	130	117	247	3	4	7	254
Newport.....	151	150	301				301
Penn.....	198	188	386				386
Pleasant Valley.....	142	145	287				287
Scott.....	92	103	195				195
Washington.....	192	200	392				392
Total.....	2,249	2,201	4,450	10	12	22	4,472

"Table II: Population by Subdivisions of Counties," The Seventh Census of the United States, 1853. Courtesy of U.S. Census

Population in Iowa in 1850 and 1860 U.S. Censuses, 1853/1864 (pg.5)

STATISTICS OF IOWA.

947

TABLE II.—POPULATION BY SUBDIVISIONS OF COUNTIES—Continued.

13.—JONES COUNTY.							
Cities, towns, townships, districts, parishes, precincts, wards, hundreds, &c.	WHITES.			FREE COLORED.			AGGREGATE POPULATION.
	M.	F.	Total.	M.	F.	Total.	
Clay	252	193	445				445
Fairview	243	226	469		1	1	470
Fairview	132	119	251				251
Greenfield	89	79	168				168
Monticello	137	115	252				252
Richland	224	190	414				414
Rome	321	263	584				584
Washington	229	194	423				423
Total	1,627	1,379	3,006		1	1	3,007

14.—KEOKUK COUNTY.							
Adams	17	12	29				29
Benton	219	213	432				432
Clear Creek	121	121	242				242
English River	47	43	90				90
Jerman	121	118	239				239
Jackson	312	290	602				602
Lancaster	180	169	349				349
Lancaster	54	41	95				95
Liberty	3	2	5				5
Richland	424	341	765				765
Richland	125	114	239				239
Sigourney	273	263	536				536
Sigourney	73	89	162				162
Steady Run	250	217	467				467
Van Buren	138	145	283				283
Warren	145	142	287				287
Total	2,502	2,320	4,822				4,822

15.—LEE COUNTY.							
Fort Madison	793	716	1,509				1,509
Keokuk	1,262	1,190	2,452	15	11	26	2,478
Montrose	635	600	1,235		4	4	1,239
Montrose	256	221	477	1	6	7	484
West Point	391	311	702				702
West Point	278	268	546				546

16.—LOUISA COUNTY.							
Columbus city (township)	624	557	1,181		2	2	1,183
Florence	418	351	769	4	3	7	776
Fredonia	192	177	369				369
Jefferson	348	292	640	3	3	6	646
Grand View	555	472	1,027		1	1	1,028
Wapello	299	302	601				601
Wapello	181	155	336				336
Total	2,617	2,306	4,923	7	9	16	4,939

17.—MAHASKA COUNTY.							
Oskaloosa	325	300	625				625

“Table II: Population by Subdivisions of Counties,” The Seventh Census of the United States, 1853.
Courtesy of U.S. Census

Population in Iowa in 1850 and 1860 U.S. Censuses, 1853/1864 (pg.6)

948

CENSUS OF 1850.

TABLE II.—POPULATION BY SUBDIVISIONS OF COUNTIES—Continued.

18.—MUSCATINE COUNTY.							
Cities, towns, townships, districts, parishes, precincts, wards, hundreds, &c.	WHITES.			FREE COLORED.			AGGREGATE POPULATION.
	M.	F.	Total.	M.	F.	Total.	
Bloomington.....	109	90	199				199
Cedar.....	139	152	291				291
Montpelier.....	199	179	378				378
Moscow.....	307	260	567				567
Muscatine.....	1,327	1,145	2,472	35	33	68	2,540
Pike.....	146	119	265				265
Seventy-six.....	231	189	420				420
Sweetland.....	320	274	594				594
Wapsanock.....	254	222	476	1		1	477
Total.....	3,032	2,630	5,662	36	33	69	5,731
19.—POLK COUNTY.							
Fort Des Moines.....	290	212	502				502
20.—SCOTT COUNTY.							
Davenport.....	995	843	1,838	8	2	10	1,848
21.—VAN BUREN COUNTY.							
Birmingham.....	122	109	231				231
Bonaparte.....	169	137	306				306
Cedar.....	325	283	608				608
Chequest.....	365	343	708				708
Des Moines.....	350	331	681				683
Farmington.....	759	728	1,487	2	2	2	1,489
Jackson.....	285	300	585				585
Harrisburg.....	322	281	603		1	1	604
Keosauqua.....	441	445	886				886
Lick Creek.....	346	359	705				705
Union.....	423	407	830				830
Van Buren.....	503	466	969				969
Vernon.....	350	364	714				714
Village.....	476	431	907				907
Washington.....	508	480	988				988
Total.....	6,287	5,978	12,265	2	3	5	12,270

"Table II: Population by Subdivisions of Counties," The Seventh Census of the United States, 1853.
Courtesy of U.S. Census

Population in Iowa in 1850 and 1860 U.S. Censuses, 1853/1864 (pg.7)

TABLE No. 3.—POPULATION OF CITIES, TOWNS, &c.

CITIES, TOWNS, &c.	COUNTIES.	WHITE.			FREE COLORED.			Aggregate.
		M.	F.	Total.	M.	F.	Total.	
Grand River.....	Adair.....	123	99	222				222
Harrison.....	do.....	66	72	138				138
Jefferson.....	do.....	53	41	94				94
Summerset.....	do.....	144	123	267				267
Washington.....	do.....	150	113	263				263
Carl.....	Adams.....	47	38	85				85
Colony.....	do.....	40	33	73				73
Jasper.....	do.....	106	103	209				209
Nodaway.....	do.....	100	84	184				184
Queen City.....	do.....	115	97	212				212
Quincy.....	do.....	237	214	451				451
Union.....	do.....	37	25	62				62
Washington.....	do.....	140	117	257				257
Center.....	Allamakee.....	331	289	620				620
Fairview.....	do.....	141	129	270				270
Franklin.....	do.....	375	377	752				752
French Creek.....	do.....	227	209	436				436
Hanover.....	do.....	189	166	355				355
Iowa.....	do.....	102	62	164				164
Jefferson.....	do.....	547	461	1,018	1	1	2	1,019
La Fayette.....	do.....	417	397	814				814
Lansing.....	do.....	634	561	1,195	1	1	2	1,197
Linton.....	do.....	358	302	660				660

“Table No. 3 - Population of Cities, Towns, &c.,” The Eighth Census of the United States, 1864. Courtesy of U.S. Census

Population in Iowa in 1850 and 1860 U.S. Censuses, 1853/1864 (pg.8)

140

STATE OF IOWA.

TABLE No. 3.—POPULATION OF CITIES, TOWNS, &c.—Continued.

CITIES, TOWNS, &c.	COUNTIES.	WHITE.			FREE COLORED.			Aggregate.
		M.	F.	Total.	M.	F.	Total.	
Ludlow	Allamakee	333	305	638				638
Makee	do.	732	691	1,423	1	1	2	1,425
Paint Creek	do.	450	400	850				850
Post	do.	396	369	765				765
Taylor	do.	410	396	806				806
Union City	do.	170	164	334				334
Union Prairie	do.	386	340	726				726
Waterloo	do.	210	196	406				406
Bollair	Appanoose	347	287	634				634
Caldwell	do.	417	387	804				804
Center	do.	265	244	509				509
Centerville	do.	417	403	820				820
Chariton	do.	303	264	567				567
Douglas	do.	198	200	398				398
Franklin	do.	334	284	608				608
Independence	do.	403	344	747				747
Johns	do.	307	291	598				598
Pleasant	do.	562	496	1,058				1,058
Sharon	do.	219	206	425				425
Shoal Creek	do.	244	229	473				473
Taylor	do.	457	393	850				850
Udell	do.	440	402	842		1	1	843
Union	do.	318	304	622				622
Walnut	do.	274	256	530				530
Washington	do.	429	392	821				821
Wells	do.	312	300	612	6	6	12	624
Benton	Benton	248	225	473				473
Big Grove	do.	214	172	386	1		1	387
Bruce	do.	104	89	193				193
Canton	do.	492	414	906				906
Cedar	do.	310	237	547				547
Cue	do.	230	166	396				396
Eden	do.	170	151	321				321
El Dorado	do.	52	53	105				105
Fremont	do.	97	86	183				183
Harrison	do.	230	186	416				416
Homer	do.	39	30	69				69
Iowa	do.	287	255	542				542
Jackson	do.	233	232	465				465
Kane	do.	56	56	112				112
Le Roy	do.	200	195	395				395
Monroe	do.	116	110	226				226
Polk	do.	484	432	916				916
Saint Clair	do.	86	84	170				170
Taylor	do.	751	750	1,501				1,510
Union	do.	72	62	134				134
Barclay	Black Hawk	172	168	340				340
Beaumont	do.	95	83	178				178
Big Creek	do.	286	227	513				513
Black Hawk	do.	131	120	251				251
Cedar	do.	165	146	311				311
Cedar Falls	do.	760	738	1,498	3	2	5	1,503
Eagle	do.	36	33	69				69
East Waterloo	do.	512	498	1,010	1	2	3	1,013
Fox	do.	104	100	204				204
Lester	do.	272	225	497	5	5	10	507
Mount Vernon	do.	190	159	349				349
Orange	do.	154	147	301				301
Foyner	do.	198	193	391				391
Spring Creek	do.	314	230	544				544
Union	do.	96	91	187				187
Washington	do.	189	169	358				358
Waterloo	do.	608	597	1,205				1,205
Cass	Boone	164	136	300				300
Des Moines	do.	630	596	1,216				1,216
Dodge	do.	303	252	555				555
Douglas	do.	301	292	593				593
Jackson	do.	106	101	207				207
Marcy	do.	188	175	363				363

“Table No. 3 - Population of Cities, Towns, &c.,” The Eighth Census of the United States, 1864. Courtesy of U.S. Census

Population in Iowa in 1850 and 1860 U.S. Censuses, 1853/1864 (pg.9)

STATE OF IOWA.

141

TABLE No. 3.—POPULATION OF CITIES, TOWNS, &c.—Continued.

CITIES, TOWNS, &c.	COUNTIES.	WHITE.			FREE COLORED.			Aggregate.
		M.	F.	Total.	M.	F.	Total.	
North	Boone	207	103	369				369
Pilot Mound	do.	90	85	175				175
Union	do.	77	53	130				130
Yell	do.	167	157	324				324
Dayton	Bremer	83	80	162				162
Douglas	do.	69	60	129				129
Franklin	do.	160	136	296	1		1	297
Frederick	do.	78	66	144				144
Fremont	do.	117	118	235				235
Jackson	do.	366	306	672				672
Jefferson	do.	267	241	508				508
Lafayette	do.	171	146	317				317
Leroy	do.	116	101	217				217
Maxfield	do.	147	110	257				257
Polk	do.	265	241	506				506
Sumner	do.	114	98	212				212
Warren	do.	83	86	169				169
Washington	do.	585	501	1,086	2	2	4	1,090
Alton	Buchanan	335	292	627				627
Buffalo Grove	do.	143	116	259				259
Byron	do.	233	202	435				435
Cano	do.	133	109	242				242
Fremont	do.	64	43	107				107
Homer	do.	91	81	172				172
Independence	do.	717	677	1,394	1		1	1,395
Jefferson	do.	387	327	714				714
Liberty	do.	560	538	1,098				1,098
Madison	do.	230	219	449				449
Middlefield	do.	119	98	217				217
Newton	do.	279	230	509				509
Perry	do.	206	182	388	1		1	389
Sumner	do.	87	71	158				158
Superior	do.	273	241	514				514
Washington	do.	307	294	601				601
Albion	Butler	186	153	339				339
Beaver	do.	284	262	546				546
Benezetto	do.	30	24	54				54
Butler	do.	515	447	962	1		1	963
Cold Water	do.	135	129	264				264
Fremont	do.	47	43	90				90
Jackson	do.	37	41	78				78
Jefferson	do.	126	115	241				241
Monroe	do.	113	91	203				203
Pittsford	do.	130	116	246				246
Ripley	do.	90	61	151				151
Shell Rock	do.	227	211	438				438
West Point	do.	28	53	111				111
Calhoun	Calhoun	84	63	147				147
Jasper	Carroll	72	71	143				143
Newton	do.	70	68	138				138
Breckenridge	Cass	26	19	45				45
Brighton	do.	45	28	73				73
Cass	do.	354	291	645				645
Edna	do.	89	73	162				162
Lura	do.	75	53	128				128
Pimosa	do.	140	90	230				230
Turkey Grove	do.	184	136	320				320
Cass	Cedar	264	229	493				493
Center	do.	932	864	1,816				1,816
Durant	do.	67	60	127				127
Drayton	do.	246	224	470				470
Farmington	do.	286	214	500				500
Fremont	do.	198	173	371				371
Gower	do.	398	321	719	2		2	721
Inland	do.	232	225	457				457
Iowa	do.	465	411	876	1		1	877
Itne	do.	225	184	409				409
Massillon	do.	358	287	645				645
Mechanicsville	do.	101	94	195				195

“Table No. 3 - Population of Cities, Towns, &c.,” The Eighth Census of the United States, 1864. Courtesy of U.S. Census

Population in Iowa in 1850 and 1860 U.S. Censuses, 1853/1864 (pg.10)

TABLE No. 3.—POPULATION OF CITIES, TOWNS, &c.—Continued.

CITIES, TOWNS, &c.	COUNTIES.	WHITE.			FREE COLORED.			Aggregat ⁿ .
		M.	F.	Total	M.	F.	Total.	
Pioneer.....	Cedar.....	413	360	773				773
Red Oak.....	do.....	304	240	553				553
Rochester.....	do.....	402	368	770	1		1	771
Springdale.....	do.....	507	453	960	3		3	963
Springfield.....	do.....	485	428	913	1		1	914
Sugar Creek.....	do.....	385	319	704				704
Tipton.....	do.....	604	582	1,186	2	2	4	1,190
Falls.....	Cerro Gordo.....	136	117	253				253
Lake.....	do.....	89	74	163				163
Linn.....	do.....	12	20	32				32
Mason.....	do.....	233	197	430				430
Owens.....	do.....	35	27	62				62
Bradford.....	Chickasaw.....	467	426	893	3	2	5	898
Chickasaw.....	do.....	314	275	589				589
Dayton.....	do.....	100	87	187				187
Deerfield.....	do.....	139	130	269				269
Dresden.....	do.....	118	104	222				222
Fredericksburg.....	do.....	158	143	301				301
Jacksonville.....	do.....	196	174	370				370
New Hampton.....	do.....	163	140	303				303
Richland.....	do.....	124	146	270				270
Stapleton.....	do.....	140	129	269				269
Utica.....	do.....	242	224	466				466
Washington.....	do.....	99	93	192				192
Doyle.....	Clarke.....	412	396	808				808
Franklin.....	do.....	260	203	463				463
Fremont.....	do.....	194	164	358				358
Green Bay.....	do.....	222	189	404				404
Jackson.....	do.....	195	196	391				391
Knex.....	do.....	275	271	546				546
Liberty.....	do.....	284	257	541				541
Madison.....	do.....	81	77	158				158
Osceola.....	do.....	404	456	860				860
Troy.....	do.....	75	71	146				146
Ward.....	do.....	147	142	289				289
Washington.....	do.....	179	194	373				373
Boardman.....	Clayton.....	446	392	838	1	1	2	840
Buena Vista.....	do.....	131	111	242				242
Cass.....	do.....	506	428	934				934
Clayton.....	do.....	399	324	723				723
Cox Creek.....	do.....	394	330	724				724
Elk.....	do.....	267	243	510				510
Farmersburg.....	do.....	634	559	1,193				1,193
Giard.....	do.....	511	416	927				927
Grand Meadow.....	do.....	301	276	577				577
Garnaville.....	do.....	625	630	1,335				1,335
Guttemburg.....	do.....	606	498	1,104				1,104
Highland.....	do.....	262	214	476				476
Jefferson.....	do.....	769	617	1,386				1,386
Ledomillo.....	do.....	411	339	770				770
Mallory.....	do.....	478	452	930				930
Marion.....	do.....	280	276	556				556
McGregor.....	do.....	1,069	910	1,979	7	3	10	1,989
Mendon.....	do.....	359	294	653				653
Millville.....	do.....	432	353	785				785
Monona.....	do.....	534	501	1,035				1,035
Read.....	do.....	394	340	734				734
Sperry.....	do.....	423	418	841	4	9	13	854
Volga.....	do.....	408	381	789				789
Wagner.....	do.....	373	269	642				642
Berlin.....	Clinton.....	137	89	226				226
Bloomfield.....	do.....	427	403	840				840
Brookfield.....	do.....	337	306	643				643
Camanche.....	do.....	748	711	1,459	5	4	9	1,468
Center.....	do.....	404	351	755				755
Clinton.....	do.....	940	876	1,816				1,816
Deep Creek.....	do.....	380	287	667				667
De Witt.....	do.....	1,186	1,075	2,261				2,261
Eden.....	do.....	368	300	670				670

“Table No. 3 - Population of Cities, Towns, &c.,” The Eighth Census of the United States, 1864. Courtesy of U.S. Census

Population in Iowa in 1850 and 1860 U.S. Censuses, 1853/1864 (pg.11)

STATE OF IOWA.

143

TABLE No. 3.—POPULATION OF CITIES, TOWNS, &c.—Continued.

CITIES, TOWNS, &c.	COUNTIES.	WHITE.			FREE COLORED.			Aggregate.
		M.	F.	Total.	M.	F.	Total.	
Elk River	Clinton	710	610	1,320				1,320
Hampshire	do.	441	355	796				796
Liberty	do.	313	263	576				576
Lyons	do.	1,370	1,329	2,699	2	2	4	2,703
Olive	do.	421	365	786				786
Orange	do.	187	167	354				354
Sharon	do.	370	308	678				678
Spring Rock	do.	390	331	721				721
Washington	do.	303	257	560				560
Waterford	do.	326	254	580				580
Wilton	do.	260	240	518				518
Dennison	Crawford	78	73	150				150
Milford	do.	58	62	120				120
Union	do.	65	48	113				113
Adel	Dallas	1,034	935	1,969				1,969
Boone	do.	300	277	577				577
Dallas	do.	108	83	191				191
Des Moines	do.	304	281	585				585
Linn	do.	265	256	521				521
Spring Valley	do.	110	85	195				195
Sugar Grove	do.	134	118	252				252
Union	do.	368	317	685				685
Washington	do.	95	73	168				168
Walnut	do.	58	43	101				101
Bloomfield	Davis	500	439	939	1		1	940
Drakesville	do.	253	272	525				525
Fabius	do.	637	605	1,242				1,242
Fox River	do.	388	569	1,157				1,157
Grove	do.	575	531	1,106				1,106
Marion	do.	411	389	800				800
Perry	do.	419	367	786				786
Prairie	do.	287	251	538				538
Roscoe	do.	231	201	432				432
Salt Creek	do.	514	470	984	1		1	985
Sick Creek	do.	522	504	1,026				1,026
Soap Creek	do.	433	418	851				851
Union	do.	633	560	1,193				1,193
Wyeconda	do.	714	673	1,387				1,387
Bloomington	Decatur	69	76	145				145
Burrill	do.	295	268	563				563
Center	do.	635	584	1,219				1,219
Decatur	do.	482	470	952				952
Eden	do.	417	374	791				791
Fayette	do.	84	82	166				166
Franklin	do.	172	145	317				317
Garden Grove	do.	286	245	531	2	3	5	536
Grand River	do.	85	96	181				181
Hamilton	do.	401	348	749		1	1	750
High Point	do.	340	310	650				650
Long Creek	do.	337	305	642				642
Morgan	do.	196	196	392				392
New Buda	do.	166	154	320	1		1	321
Richland	do.	253	204	457				457
Woodland	do.	288	307	595				595
Adams	Delaware	173	145	318				318
Bremen	do.	219	192	411				411
Coffin's Grove	do.	278	225	503				503
Colony	do.	710	670	1,380				1,380
Delaware	do.	545	513	1,058				1,058
Delli	do.	572	400	1,062	1		1	1,063
Elk	do.	430	418	877				877
Hazel Green	do.	165	128	293				293
Honey Creek	do.	460	420	880				880
Milo	do.	263	240	503				503
North Fork	do.	289	285	574				574
Onida	do.	296	250	546				546
Prairie	do.	68	63	131				131
Richmond	do.	340	293	633				633
South Fork	do.	612	591	1,203				1,203

"Table No. 3 - Population of Cities, Towns, &c.," The Eighth Census of the United States, 1864. Courtesy of U.S. Census

Population in Iowa in 1850 and 1860 U.S. Censuses, 1853/1864 (pg.12)

144

STATE OF IOWA.

TABLE No. 3.—POPULATION OF CITIES, TOWNS, &c.—Continued.

CITIES, TOWNS, &c.	COUNTIES.	WHITE.			FREE COLORED.			Aggregate.
		M.	F.	Total.	M.	F.	Total.	
Union	Delaware	310	313	623				623
Angusta	Des Moines	235	217	452				452
Benton	do.	619	538	1,157				1,157
Burlington	do.	3,404	3,285	6,689	9	8	17	6,706
Danville	do.	848	767	1,615				1,615
Flint River	do.	692	595	1,287				1,287
Franklin	do.	781	702	1,483				1,483
Huron	do.	404	328	732				732
Jackson	do.	65	58	123				123
Pleasant Grove	do.	566	515	1,081				1,081
Union	do.	608	539	1,147	6	4	10	1,157
Washington	do.	384	319	703				703
Yellow Springs	do.	844	760	1,604				1,604
Okobogo	Dickinson	28	19	47				47
Spirit Lake	do.	85	48	133				133
Cascade	Dubuque	582	512	1,094				1,094
Center	do.	583	525	1,108	1		1	1,109
Concord	do.	538	497	1,035		6	6	1,041
Dodge	do.	343	268	611				611
Dubuque	do.	6,413	6,513	12,926	35	39	74	13,000
Iowa	do.	432	355	807				807
Jefferson	do.	761	633	1,414				1,414
Julian	do.	686	633	1,319				1,319
Liberty	do.	646	539	1,185				1,185
Mosalem	do.	528	435	963				963
New Wine	do.	848	747	1,595				1,595
Peru	do.	469	364	833				833
Prairie Creek	do.	456	359	815				815
Table Mound	do.	569	543	1,112				1,112
Taylor	do.	605	529	1,134				1,134
Vernon	do.	627	518	1,145				1,145
Washington	do.	475	404	879				879
White Water	do.	569	519	1,088				1,088
Auburn	Fayette	500	480	980				980
Banks	do.	50	41	91				91
Center	do.	105	108	213				213
Clermont	do.	439	438	877				877
Dover	do.	426	335	761				761
Eden	do.	384	316	700				700
Fairfield	do.	486	449	935				935
Fremont	do.	97	91	188				188
Harlan	do.	56	46	102				102
Illyria	do.	439	361	800				800
Jefferson	do.	190	167	357				357
Oran	do.	207	194	401				401
Pleasant Valley	do.	500	423	923				923
Putnam	do.	198	182	380				380
Richland	do.	100	89	189				189
Scott	do.	43	34	76				76
Smithfield	do.	218	192	410				410
Westfield	do.	630	576	1,215				1,215
West Union	do.	993	889	1,882	29	25	54	1,936
Windsor	do.	291	248	539				539
Clinton	Franklin	94	67	161				161
Geneva	do.	98	71	169				169
Ingham	do.	82	56	138				138
Morgan	do.	47	54	101				101
Osceola	do.	88	73	161				161
Reeve	do.	214	180	394				394
Washington	do.	93	92	185				185
Benton	Fremont	184	157	341	1	2	3	344
Fisher	do.	148	129	277				277
Franklin	do.	336	279	615				615
Madison	do.	271	221	492				492
Monroe	do.	156	139	295				295
Ross	do.	368	308	676		2	2	678
Scott	do.	355	298	653				653
Sidney	do.	971	759	1,730				1,730
Cedar	Floyd	71	54	125				125

“Table No. 3 - Population of Cities, Towns, &c.,” The Eighth Census of the United States, 1864. Courtesy of U.S. Census

Population in Iowa in 1850 and 1860 U.S. Censuses, 1853/1864 (pg.13)

STATE OF IOWA.

145

TABLE No. 3.—POPULATION OF CITIES, TOWNS, &c.—Continued.

CITIES, TOWNS, &c	COUNTIES.	WHITE.			FREE COLORED.			Aggregate.
		M.	F.	Total.	M.	F.	Total.	
Floyd	Floyd	403	400	803				803
Niles	do	90	93	182				182
Riverton	do	173	168	341				341
Rockford	do	163	137	299				299
Rock Grove	do	200	185	384				384
St. Charles	do	474	417	891				891
Uster	do	78	59	137				137
Union	do	258	244	502				502
Jefferson	Greene	272	233	505				505
Rindrick	do	206	171	377				377
Washington	do	258	234	492				492
Beaver	Grundy	30	18	48				48
Black Hawk	do	18	14	32				32
Fairfield	do	125	95	220				220
Felix	do	123	110	232				232
Mcrose	do	43	37	80				80
Oreutt	do	35	21	56				56
Palermo	do	65	70	135				135
Neurogrovo	Guthrie	73	59	132				132
Beaver	do	53	58	111				111
Cass	do	502	443	945				945
Center	do	245	213	458				458
Dodge	do	120	119	239				239
Jackson	do	303	252	557				557
Orange	do	55	46	101				101
Penn	do	151	155	306				306
Thompson	do	113	87	200				200
Boone	Hamilton	254	200	453				453
Cass	do	144	133	277				277
Clear Lake	do	41	35	76				76
Hamilton	do	114	120	234				234
Marion	do	104	90	194				194
Norway	do	82	70	152				152
Webster	do	167	136	303				303
Avery	Hancock	50	49	99				99
Madison	do	45	35	80				80
Alden	Hardin	97	90	187				187
Clay	do	384	339	723				723
Elkora	do	561	536	1,097				1,097
Ellis	do	99	97	196				196
Etha	do	169	161	330				330
Hardin	do	306	311	617				617
Jackson	do	169	177	346				346
Point Pleasant	do	228	184	412				412
Providence	do	363	332	695				695
Union	do	364	347	711				711
Boyer	Harrison	237	206	443				443
Calhoun	do	206	202	408				408
Cass	do	58	54	112				112
Cincinnati	do	92	64	156				156
Clay	do	85	55	140				140
Harrison	do	42	27	69				69
Jackson	do	82	67	149				149
Jefferson	do	186	163	349				349
La Grange	do	101	77	178				178
Magnolia	do	278	237	515				515
Raglan	do	139	124	263		1	1	264
Saint John	do	247	193	440				440
Sioux	do	165	141	306				306
Union	do	36	36	72				72
Baltimore	Henry	373	303	676				676
Canaan	do	172	145	317				317
Center	do	802	813	1,615		1	1	1,616
Jackson	do	572	509	1,081				1,081
Jefferson	do	703	682	1,385				1,385
Marion	do	742	677	1,419				1,419
Mount Pleasant	do	1,746	1,772	3,518	10	10	20	3,538
New London	do	1,041	932	1,973		1	1	1,974
Salem	do	730	656	1,386				1,386

“Table No. 3 - Population of Cities, Towns, &c.,” The Eighth Census of the United States, 1864. Courtesy of U.S. Census

Population in Iowa in 1850 and 1860 U.S. Censuses, 1853/1864 (pg.14)

TABLE No. 3.—POPULATION OF CITIES, TOWNS, &c.—Continued.

CITIES, TOWNS, &c.	COUNTIES.	WHITE.			PIRE COLORED.			Aggregate.
		M.	F.	Total.	M.	F.	Total.	
Scott.....	Henry.....	410	350	760				760
Tippecanoe.....	do.....	738	702	1,440				1,440
Trenton.....	do.....	783	738	1,520				1,520
Wayne.....	do.....	405	384	789				789
Alton.....	Howard.....	156	137	293				293
Albia.....	do.....	216	176	392				392
Chester.....	do.....	83	70	153				153
Forest City.....	do.....	197	157	354				354
Howard.....	do.....	42	25	67				67
Howard Center.....	do.....	70	64	134				134
Iowa River.....	do.....	33	20	53				53
Jamestown.....	do.....	68	29	127				127
New Oregon.....	do.....	439	411	850				850
Paris.....	do.....	94	100	194				194
Saratoga.....	do.....	23	20	43				43
Vernon Springs.....	do.....	208	239	507	1		1	508
Dakota.....	Humboldt.....	60	50	110				110
Humboldt.....	do.....	41	26	67				67
Loti Creek.....	do.....	87	68	155				155
Corwin.....	Ida.....	25	18	43				43
Amann.....	Iowa.....	211	231	542				542
Gano.....	do.....	150	116	266				266
Dayton.....	do.....	303	276	579				579
English.....	do.....	726	644	1,370				1,370
Fillmore.....	do.....	418	319	737				737
Green.....	do.....	359	287	646				646
Hartford.....	do.....	143	135	278				278
Hilton.....	do.....	104	96	200				200
Honey Creek.....	do.....	321	271	592				592
Iowa.....	do.....	246	217	463				463
Lenox.....	do.....	185	146	331				331
Marengo.....	do.....	643	590	1,233				1,233
Sumner.....	do.....	130	142	272				272
Troy.....	do.....	265	255	520				520
Bellevue.....	Jackson.....	515	541	1,056	4	4	8	1,064
Brandon.....	do.....	583	439	1,022				1,022
Butler.....	do.....	458	436	894				894
Fairfield.....	do.....	392	284	606				606
Farmer's Creek.....	do.....	610	610	1,250				1,250
Iowa.....	do.....	535	477	1,008				1,008
Jackson.....	do.....	306	369	762				762
Maquoketa.....	do.....	541	548	1,089	1		1	1,090
Menmouth.....	do.....	518	471	989				989
Other Creek.....	do.....	468	423	893				893
Paroni.....	do.....	615	530	1,145				1,145
Perry.....	do.....	576	500	1,076				1,076
Richland.....	do.....	513	479	992				992
South Fork.....	do.....	393	387	780				780
Teto de Moris.....	do.....	513	462	975				975
Union.....	do.....	315	302	617	2		2	619
Van Buren.....	do.....	444	396	840				840
Washington.....	do.....	429	428	857				857
Buena Vista.....	Jasper.....	400	351	751				751
Clear Creek.....	do.....	308	323	631				631
Des Moines.....	do.....	662	533	1,215				1,215
Elk Creek.....	do.....	368	297	665				665
Fairview.....	do.....	555	493	1,048				1,048
Independence.....	do.....	263	208	476				476
Linn Grove.....	do.....	322	310	632				632
Malaka.....	do.....	196	162	358				358
Mariposa.....	do.....	211	193	404				404
Mound Prairie.....	do.....	210	186	396				396
Newton.....	do.....	849	767	1,616		1	1	1,617
Palo Alto.....	do.....	128	106	234				234
Poweshiek.....	do.....	470	405	875				875
Richland.....	do.....	157	140	297				297
Rock Creek.....	do.....	166	118	284				284
Black Hawk.....	Jefferson.....	368	351	719				719
Buchanan.....	do.....	632	583	1,234				1,234

“Table No. 3 - Population of Cities, Towns, &c.,” The Eighth Census of the United States, 1864. Courtesy of U.S. Census

Population in Iowa in 1850 and 1860 U.S. Censuses, 1853/1864 (pg.15)

STATE OF IOWA.

147

TABLE No. 3.—POPULATION OF CITIES, TOWNS, &c.—Continued.

CITIES, TOWNS, &c.	COUNTIES.	WHITE.			FREE COLORED.			Aggregate.
		M.	F.	Total.	M.	F.	Total.	
Cedar	Jefferson	450	407	856				856
Des Moines	do	706	658	1,364				1,364
Fairfield	do	832	832	1,664	3	5	8	1,692
Liberty	do	501	450	951				951
Lockridge	do	712	701	1,413				1,413
Locust Grove	do	591	538	1,129				1,129
Penn	do	691	623	1,314				1,314
Polk	do	560	561	1,120				1,120
Round Prairie	do	562	487	1,049				1,049
Walnut	do	542	498	1,040				1,040
Big Grove	Johnson	495	459	954				954
Cedar	do	407	382	789				789
Clear Creek	do	243	232	475				475
Fremont	do	313	285	598				598
Gmhann	do	381	370	751				751
Hardin	do	168	144	312				312
Iowa City	do	2,583	2,609	5,192	10	12	22	5,214
Jefferson	do	371	332	703				703
Liberty	do	297	261	558				558
Monroe	do	259	247	499				499
Newport	do	281	257	538				538
Oxford	do	287	248	535				535
Penn	do	618	551	1,169	1		1	1,170
Pleasant Valley	do	361	312	673	2	4	6	679
Scott	do	360	333	693	1		1	694
Sharon	do	381	343	724				724
Union	do	223	176	398				398
Washington	do	361	288	649				649
Anamosa	Jones	469	416	885	2	2	4	889
Cass	do	311	286	597				597
Castle Grove	do	302	257	559				559
Clay	do	321	311	632		1	1	633
Fairview	do	659	589	1,248		1	1	1,249
Greenfield	do	452	384	836				836
Hale	do	290	280	570				570
Jackson	do	297	254	551				551
Madison	do	306	259	565				565
Monticello	do	479	407	886				886
Oxford	do	309	328	637				637
Richland	do	460	401	861		1	1	862
Roma	do	433	409	844				844
Scotch Grove	do	424	372	796				796
Washington	do	552	490	1,048				1,048
Wayne	do	316	264	580				580
Wyoming	do	616	558	1,144				1,144
Adams	Keokuk	275	227	502				502
Benton	do	407	366	773				773
Clear Creek	do	492	349	751				751
English	do	520	511	1,031				1,031
German	do	515	491	1,006				1,006
Jackson	do	635	535	1,170				1,170
La Fayette	do	203	201	406				406
Lancaster	do	559	499	1,058				1,058
Liberty	do	274	257	531				531
Prairie	do	117	90	207				207
Richland	do	755	685	1,440				1,440
Sigourney	do	660	628	1,288				1,288
Steady Run	do	508	458	966				966
Van Buren	do	348	362	710				710
Warren	do	278	251	529				529
Washington	do	490	413	903				903
Algona	Kossuth	119	97	216				216
Cresco	do	18	9	27				27
Irvington	do	95	78	173				173
Cedar	Lee	510	461	971	3	3	6	977
Charleston	do	683	668	1,351				1,351
Denmark	do	424	419	843				843
Des Moines	do	570	529	1,099				1,099
Fort Madison	do	1,526	1,360	2,886				2,886

“Table No. 3 - Population of Cities, Towns, &c.,” The Eighth Census of the United States, 1864. Courtesy of U.S. Census

Population in Iowa in 1850 and 1860 U.S. Censuses, 1853/1864 (pg.16)

148

STATE OF IOWA.

TABLE No. 3.—POPULATION OF CITIES, TOWNS, &c.—Continued.

CITIES, TOWNS, &c.	COUNTIES.	WHITE.			FREE COLORED.			Aggregate.
		M.	F.	Total.	M.	F.	Total.	
Franklin	Lee	671	819	1,490				1,490
Green Bay	do	374	287	661				661
Harrison	do	533	445	978				978
Jackson	do	653	618	1,271	3	2	5	1,276
Jefferson	do	487	333	820	15	9	24	844
Keokuk	do	3,926	4,031	7,957	95	84	179	8,136
Marion	do	610	511	1,121				1,121
Montrose	do	1,015	943	1,958	23	8	30	1,988
Pleasant Ridge	do	521	474	995				995
Van Buren	do	572	529	1,101				1,101
Washington	do	625	521	1,146				1,146
West Point	do	1,045	927	1,972		1	1	1,973
Bertram	Linn	423	375	808				808
Bowlder	do	269	231	500				500
Brown	do	539	456	995				995
Buffalo	do	164	137	321				321
Cedar Rapids	do	920	909	1,829	1		1	1,830
Clinton	do	339	308	647				647
College	do	465	393	858				858
Fairfax	do	132	133	265	1		1	266
Fayette	do	364	318	682				682
Franklin	do	518	451	969				969
Jackson	do	357	310	667				667
Kingston	do	212	125	337				337
Linn	do	519	473	992		1	1	993
Lisbon	do	226	206	432				432
Maine	do	377	333	710				710
Marion	do	756	664	1,420		1	1	1,421
Monroe	do	347	296	643				643
Mount Vernon	do	269	373	642	4	2	6	648
Otter Creek	do	529	488	1,017				1,017
Putnam	do	316	263	579		1	1	580
Rapids	do	456	402	858				858
Spring Grove	do	153	136	289				289
Washington	do	429	380	809				809
Columbus	Louisa	682	603	1,285				1,285
Columbus City	do	237	262	519	7	4	11	530
Concord	do	304	273	577				577
Elliott	do	148	115	263				263
Elm Grove	do	205	267	472				472
Grand View	do	673	679	1,352	1		1	1,353
Jefferson	do	318	260	578	6	2	8	586
Marshall	do	394	334	728	23	21	44	772
Morning Sun	do	566	509	1,075				1,075
Oakland	do	225	197	422				422
Port Louisa	do	346	304	650	9	8	17	667
Union	do	235	197	432				432
Wapello	do	515	477	992				992
Benton	Lucas	214	194	408				408
Cedar	do	308	292	600				600
Chariton	do	638	500	1,138	1		1	1,139
English	do	291	230	521				521
Jackson	do	123	121	244				244
Liberty	do	214	185	399				399
Otter	do	223	217	440				440
Pleasant	do	134	135	269				269
Union	do	214	207	421				421
Warren	do	272	230	502		1	1	503
Washington	do	140	114	254				254
Whitebreast	do	245	215	460				460
Center	Madison	1,154	1,115	2,269				2,269
Crawford	do	244	234	478				478
Grand River	do	129	148	277				277
Jackson	do	178	141	319				319
Jefferson	do	89	71	160				160
Lee	do	168	140	308				308
Madison	do	240	236	476				476
Ohio	do	248	228	476				476
South	do	434	308	842				842

“Table No. 3 - Population of Cities, Towns, &c.,” The Eighth Census of the United States, 1864. Courtesy of U.S. Census

Population in Iowa in 1850 and 1860 U.S. Censuses, 1853/1864 (pg.17)

STATE OF IOWA.

149

TABLE No. 3.—POPULATION OF CITIES, TOWNS, &c.—Continued.

CITIES, TOWNS, &c.	COUNTIES.	WHITE.			FREE COLORED.			Aggregate.
		M.	F.	Total.	M.	F.	Total.	
Walnut	Madison	308	283	591				591
Webster	do	123	115	238				238
Winterset	do	456	459	915				915
Adams	Mahaska	301	234	535				535
Black Oak	do	398	338	736				736
Cedar	do	445	474	919				919
Des Moines	do	304	294	598				598
Harrison	do	504	454	958				958
Jefferson	do	320	279	599				599
Madison	do	230	188	417				417
Monroe	do	547	480	1,027				1,027
Oskaloosa	do	2,238	2,149	4,387	4	2	6	4,393
Pleasant Grove	do	284	263	547				547
Prairie	do	269	216	485	5	5	10	495
Richland	do	550	479	1,029				1,029
Scott	do	534	502	1,036				1,036
Union	do	301	320	621				621
White Oak	do	435	461	896				896
Ashton	Manona	32	19	51	1		1	52
Belvidere	do	81	67	148				148
Boyer	do	28	20	48				48
Franklin	do	153	148	301				301
Kennebec	do	36	29	65				65
Mapleton	do	60	53	113				113
Preparation	do	35	23	58				58
West Fork	do	28	19	47				47
Clay	Marion	588	532	1,120				1,120
Dallas	do	405	411	816				816
Franklin	do	176	145	321				321
Indiana	do	457	421	878	19	13	32	910
Knoxville	do	1,219	1,152	2,371				2,371
Lake Prairie	do	939	812	1,751				1,751
Liberty	do	538	513	1,051				1,051
Pella	do	831	813	1,644				1,644
Perry	do	139	144	283				283
Pleasant Grove	do	512	449	961				961
Polk	do	345	296	641				641
Red Rock	do	454	446	900				900
Summit	do	411	338	749				749
Swan	do	402	399	801				801
Union	do	215	200	415				415
Washington	do	470	445	915				915
Bangor	Marshall	272	268	540				540
Elen	do	150	135	285				285
Green Castle	do	90	98	188				188
Iowa	do	561	525	1,086				1,086
Jefferson	do	184	136	320				320
Le Grand	do	301	230	530				530
Liberty	do	261	217	478				478
Marietta	do	396	364	760				760
Marion	do	256	228	484				484
Marshall	do	536	445	981				981
Vienna	do	77	70	147				147
Washington	do	85	71	156				156
Glenwood	Mills	343	270	613		1	1	614
Indian Creek	do	139	105	244				244
Ingraham	do	89	70	159				159
Lyons	do	242	203	447				447
Mud Creek	do	107	79	186				186
Oak	do	230	182	412				412
Plattville	do	249	210	459	4	3	7	466
Rawes	do	235	206	441				441
Saint Mary's	do	144	124	268	6	2	8	276
Silver Creek	do	284	233	517				517
White Cloud	do	163	134	296				296
Burr Oak	Mitchell	75	53	128				128
Cedar	do	181	139	320				320
Jenkins	do	127	99	226				226
Mitchell	do	376	281	657				657

“Table No. 3 - Population of Cities, Towns, &c.,” The Eighth Census of the United States, 1864. Courtesy of U.S. Census

Population in Iowa in 1850 and 1860 U.S. Censuses, 1853/1864 (pg.18)

150

STATE OF IOWA.

TABLE No. 3.—POPULATION OF CITIES, TOWNS, &c.—Continued.

CITIES, TOWNS, &c.	COUNTIES.	WHITE.			FREE COLORED.			Aggregate.
		M.	F.	Total.	M.	F.	Total.	
Osage	Mitchell	437	379	816				816
Otranto	do	129	100	229				229
Richfield	do	65	63	128				128
Saint Ansgar	do	250	240	490				490
Stacyville	do	136	118	254				254
Wayne	do	79	79	158				158
Albia	Monroe	362	318	680				680
Bluff Creek	do	365	310	675				675
Cedar	do	289	276	565				565
Franklin	do	206	167	373				373
Gullford	do	363	341	707				707
Jackson	do	228	186	414				414
Mantua	do	426	415	841				841
Monroe	do	280	265	545				545
Pleasant	do	402	449	851	1		1	852
Troy	do	352	335	687		1	1	688
Union	do	422	478	900				900
Urbana	do	376	367	743				743
Wayne	do	255	278	533				533
Douglas	Montgomery	110	102	212				212
Frankfort	do	168	123	291				291
Jackson	do	120	121	241				241
Red Oak	do	109	98	207				207
Washington	do	103	107	210				210
West	do	50	40	90				90
Bloomington	Muscatine	790	739	1,529	7	11	18	1,547
Cedar	do	195	413	608				608
Fulton	do	294	241	535				535
Goshen	do	642	575	1,217	8	5	13	1,230
Lake	do	326	317	643				643
Montpelier	do	494	370	864				864
Moscow	do	471	428	899				899
Muscatine	do	676	2,567	3,243	32	40	72	3,315
Orono	do	109	82	191				191
Pike	do	227	188	415				415
Seventy-Six	do	409	400	809				809
Sweetland	do	666	604	1,270				1,270
Wapsipawicon	do	574	497	1,071				1,071
Wilton	do	633	571	1,204				1,204
Amity	Page	227	255	482		1	1	483
Buchanan	do	473	384	857				857
Douglas	do	75	60	135				135
Fremont	do	56	51	107				107
Nebraska	do	213	209	422				422
Nodaway	do	747	626	1,373				1,373
Pierce	do	52	54	106				106
Turkey	do	188	178	366				366
Valley	do	148	122	270				270
Washington	do	105	95	200				200
Des Moines	Pocahontas	51	52	103				103
Cylinder	Palo Alto	17	19	36				36
Palo Alto	do	58	38	96				96
Plymouth	Plymouth	56	49	105				105
Westfield	do	26	17	43				43
Allen	Folk	251	234	485				485
Beaver	do	164	136	300				300
Bloomfield	do	183	137	320				320
Camp	do	634	617	1,251				1,251
Delaware	do	255	209	464	1		1	465
Des Moines	do	2,036	1,917	3,953	5	7	12	3,965
Douglas	do	77	69	146				146
Elkhart	do	89	67	156				156
Four Mile	do	240	222	462				462
Franklin	do	81	93	174				174
Jefferson	do	205	258	463				463
Leo	do	218	189	407				407
Madison	do	676	633	1,309				1,309
Saylor	do	383	385	768				768
Washington	do	85	67	152				152

“Table No. 3 - Population of Cities, Towns, &c.,” The Eighth Census of the United States, 1864. Courtesy of U.S. Census

Population in Iowa in 1850 and 1860 U.S. Censuses, 1853/1864 (pg.19)

STATE OF IOWA.

151

TABLE No. 3.—POPULATION OF CITIES, TOWNS, &c.—Continued.

CITIES, TOWNS, &c.	COUNTIES.	WHITE.			FREE COLORED.			Aggregate.
		M.	F.	Total.	M.	F.	Total.	
Boomer	Pottawatomie	148	127	275				275
Center	do	72	55	127				127
Council Bluffs	do	1,054	948	2,002	6	3	9	2,011
Creseent	do	283	273	556				556
Grove	do	93	70	163				163
James	do	60	51	111				111
Kauo	do	453	407	862				862
Knox	do	86	68	154				154
Macedonia	do	73	57	130				130
Rockford	do	157	103	260				260
Silver Creek	do	42	41	83				83
Walnut Creek	do	73	81	154				154
York	do	49	48	97				97
Benr Creek	Poweshiek	142	133	275				275
Brooklyn	do	98	86	184				184
Deep River	do	230	188	418				418
Grimnell	do	264	256	520	1	1	2	522
Jackson	do	323	299	622	3	1	4	626
Jefferson	do	191	102	293				293
Madison	do	144	94	238				238
Malcom	do	129	105	234				234
Montezuma	do	292	272	564				564
Pleasant	do	108	98	206	1		1	207
Sugar Creek	do	216	225	441				441
Union	do	347	322	669				669
Warren	do	288	263	551				551
Washington	do	188	168	356				356
Athens	Ringgold	120	121	241				241
East Fork	do	139	118	257				257
Lott's Creek	do	268	208	476				476
Middle Fork	do	100	91	191				191
Mount Ayr	do	203	185	388				388
Platte	do	93	89	182				182
Sand Creek	do	106	115	221				221
Washington	do	327	287	614				614
West Fork	do	183	172	355	1		1	356
Jackson	Sac	78	73	151				151
Sac	do	58	37	95				95
Allen's Grove	Scott	270	231	501				501
Dino Grass	do	569	470	1,039				1,039
Buffalo	do	592	537	1,129				1,129
Cleona	do	189	158	347				347
Davenport	do	5,583	5,650	11,233	13	12	25	11,267
Hickory Grove	do	563	441	1,003				1,003
Liberty	do	376	283	659	1		1	660
Le Claire	do	750	692	1,442				1,442
Pleasant Valley	do	370	333	703				703
Princeton	do	785	637	1,422	1		1	1,423
Rockingham	do	103	100	203				203
Winfield	do	1,068	875	1,943				1,943
Round	Shelby	247	200	447				447
Bancombe	Sioux	9	1	10				10
Collins	Story	67	69	136				136
Franklin	do	185	136	321				321
Indian Creek	do	346	330	676				676
La Fayette	do	226	200	426				426
Milford	do	81	64	145				145
Nevada	do	428	430	858				858
New Albany	do	123	166	289				289
Palesino	do	160	135	295				295
Union	do	210	188	398				398
Washington	do	231	237	468				468
Buckingham	Tama	101	95	196				196
Carlton	do	187	167	354				354
Carroll	do	49	37	86				86
Columbia	do	173	179	352				352
Crystal	do	71	74	145				145
Geneseo	do	117	93	210				210
Howard	do	223	223	446				446

“Table No. 3 - Population of Cities, Towns, &c.,” The Eighth Census of the United States, 1864. Courtesy of U.S. Census

Population in Iowa in 1850 and 1860 U.S. Censuses, 1853/1864 (pg.20)

152

STATE OF IOWA.

TABLE No. 3.—POPULATION OF CITIES, TOWNS, &c.—Continued.

CITIES, TOWNS, &c.	COUNTIES.	WHITE.			FREE COLORED.			Aggregate.
		M.	F.	Total.	M.	F.	Total.	
Indian Village	Tama	334	285	619				619
Otter Creek	do.	233	203	436				436
Perry	do.	153	144	297				297
Richland	do.	189	172	361				361
Salt Lake	do.	143	125	268				268
Spring Creek	do.	70	62	132				132
Toledo	do.	400	404	804				804
York	do.	223	166	389				389
Bedford	Taylor	210	189	400				400
Leonton	do.	126	110	246				246
Chayton	do.	181	163	344				344
Dallus	do.	132	119	251				251
Jackson	do.	119	112	231				231
Jefferson	do.	225	194	419				419
Marshall	do.	66	64	130				130
Mason	do.	160	145	305				305
Nodaway	do.	102	79	181				181
Platte	do.	14	12	26				26
Polk	do.	197	184	381				381
Ross	do.	160	142	311				311
Washington	do.	192	164	356				356
Dodge	Union	44	42	86				86
Highland	do.	118	117	235				235
Jones	do.	140	132	272				272
New Hope	do.	81	68	149				149
Platte	do.	176	146	322				322
Pleasant	do.	206	171	377				377
Union	do.	298	264	562				562
Cedar	Van Buren	514	436	950				950
Chequest	do.	434	366	800				800
Des Moines	do.	517	433	950	1	1	1	951
Furnington	do.	1,306	1,305	2,611				2,611
Harrisburg	do.	587	533	1,120				1,120
Jackson	do.	610	563	1,173				1,173
Lick Creek	do.	806	615	1,421				1,421
Union	do.	891	802	1,693	1	1	1	1,694
Van Buren	do.	1,157	1,085	2,242	1	1	2	2,244
Vernon	do.	655	598	1,253				1,253
Village	do.	826	675	1,501				1,501
Washington	do.	615	391	1,006				1,006
Adams	Wapello	732	613	1,345				1,345
Agency	do.	273	294	567				567
Cass	do.	229	273	502				502
Center	do.	447	419	866				866
Columbia	do.	401	380	781	1		1	782
Competino	do.	352	325	677				677
Dahlonaga	do.	300	260	560				560
Eddyville	do.	479	433	912	3	2	5	917
Greene	do.	560	531	1,091				1,091
Highland	do.	290	236	526				526
Keokuk	do.	230	218	448	18	14	32	480
Ottumwa	do.	806	817	1,623	4	5	9	1,632
Pleasant	do.	463	458	921				921
Polk	do.	437	400	846				846
Richland	do.	515	502	1,017				1,017
Richmond	do.	36	44	80				80
Washington	do.	720	551	1,271				1,271
Allen	Warren	271	230	501				501
Belmont	do.	211	172	383				383
Greenfield	do.	437	375	812				812
Jackson	do.	111	87	198				198
Jefferson	do.	267	274	541	1	1	1	542
Liberty	do.	196	203	399				399
Lynn	do.	258	267	525				525
Otter	do.	223	312	535				535
Palmyra	do.	516	503	1,019	1		1	1,020
Richland	do.	580	570	1,150				1,150
Squaw	do.	194	178	372				372
Union	do.	400	370	770				770

“Table No. 3 - Population of Cities, Towns, &c.,” The Eighth Census of the United States, 1864. Courtesy of U.S. Census

Population in Iowa in 1850 and 1860 U.S. Censuses, 1853/1864 (pg.21)

STATE OF IOWA.

153

TABLE No. 3.—POPULATION OF CITIES, TOWNS, &c.—Continued

CITIES, TOWNS, &c.	COUNTIES.	WHITE.			FREE COLORED.			Aggregate.
		M.	F.	Total.	M.	F.	Total.	
Virginia	Warren	118	107	225	2		2	227
Washington	do	924	913	1,837	5	5	10	1,847
White Breast	do	279	266	545				545
White Oak	do	166	160	326				326
Brighton	Washington	532	518	1,050				1,050
Cedar	do	428	344	772				772
Clay	do	407	334	741				741
Crawford	do	602	531	1,133				1,133
Dutch Creek	do	552	469	1,021				1,021
English River	do	716	665	1,381				1,381
Franklin	do	301	269	570				570
Highland	do	207	168	375				375
Iowa	do	455	382	837				837
Jackson	do	323	322	645				645
Lime Creek	do	571	541	1,112				1,112
Marion	do	445	374	819				819
Oregon	do	393	344	737				737
Seventy-Six	do	154	133	287				287
Washington	do	1,405	1,337	2,742	7	6	13	2,755
Beuton	Wayne	391	348	739		4	4	743
Clay	do	116	103	219				219
Clinton	do	212	178	390				390
Corydon	do	327	307	634	3	3	6	640
Grand River	do	229	225	454				454
Howard	do	213	187	400				400
Jackson	do	92	75	167				167
Jefferson	do	622	205	827				827
Monroe	do	256	220	476				476
Richmond	do	99	85	184				184
South Fork	do	222	189	411				421
Union	do	312	281	593	1		1	594
Walnut	do	180	158	337				347
Washington	do	224	216	440				440
Wright	do	221	226	447				507
Dayton	Webster	107	101	208				208
Douglas	do	200	202	402				402
Fort Dodge	do	346	326	672				672
Hardin	do	100	89	189				189
Otho	do	71	65	136				126
Sumner	do	55	42	97				97
Wahkeseo	do	65	54	119				119
Washington	do	166	141	307	3	1	4	311
Webster	do	88	81	169				169
Yell	do	118	83	201				201
Fairview	Winnebago	27	27	54				54
Forrest	do	66	48	114				114
Bloomfield	Winneshek	236	426	662				662
Bluffton	do	248	218	466				466
Burr Oak	do	316	275	591				591
Calmar	do	451	426	877				877
Canoe	do	379	345	724				724
Decorah	do	1,037	283	1,320				1,320
Frankville	do	492	410	902				902
Fremont	do	236	205	441				441
Glenwood	do	445	403	848				848
Hesper	do	285	244	529				529
Highland	do	272	266	538				538
Madison	do	239	195	434				434
Military	do	392	362	754				754
Orleans	do	232	185	417				417
Pleasant	do	373	285	658				658
Springfield	do	448	394	842				842
Sumner	do	365	319	684				684
Washington	do	624	501	1,125				1,125
Correctionville	Woodbury	23	24	47				47
Little Sioux	do	101	92	193				193
Sergeant's Bluff	do	64	48	112				112
Sioux City	do	416	348	764	2	1	3	767
Bristol	Worth	196	176	372				372

“Table No. 3 - Population of Cities, Towns, &c.,” The Eighth Census of the United States, 1864. Courtesy of U.S. Census

Population in Iowa in 1850 and 1860 U.S. Censuses, 1853/1864 (pg.22)

154

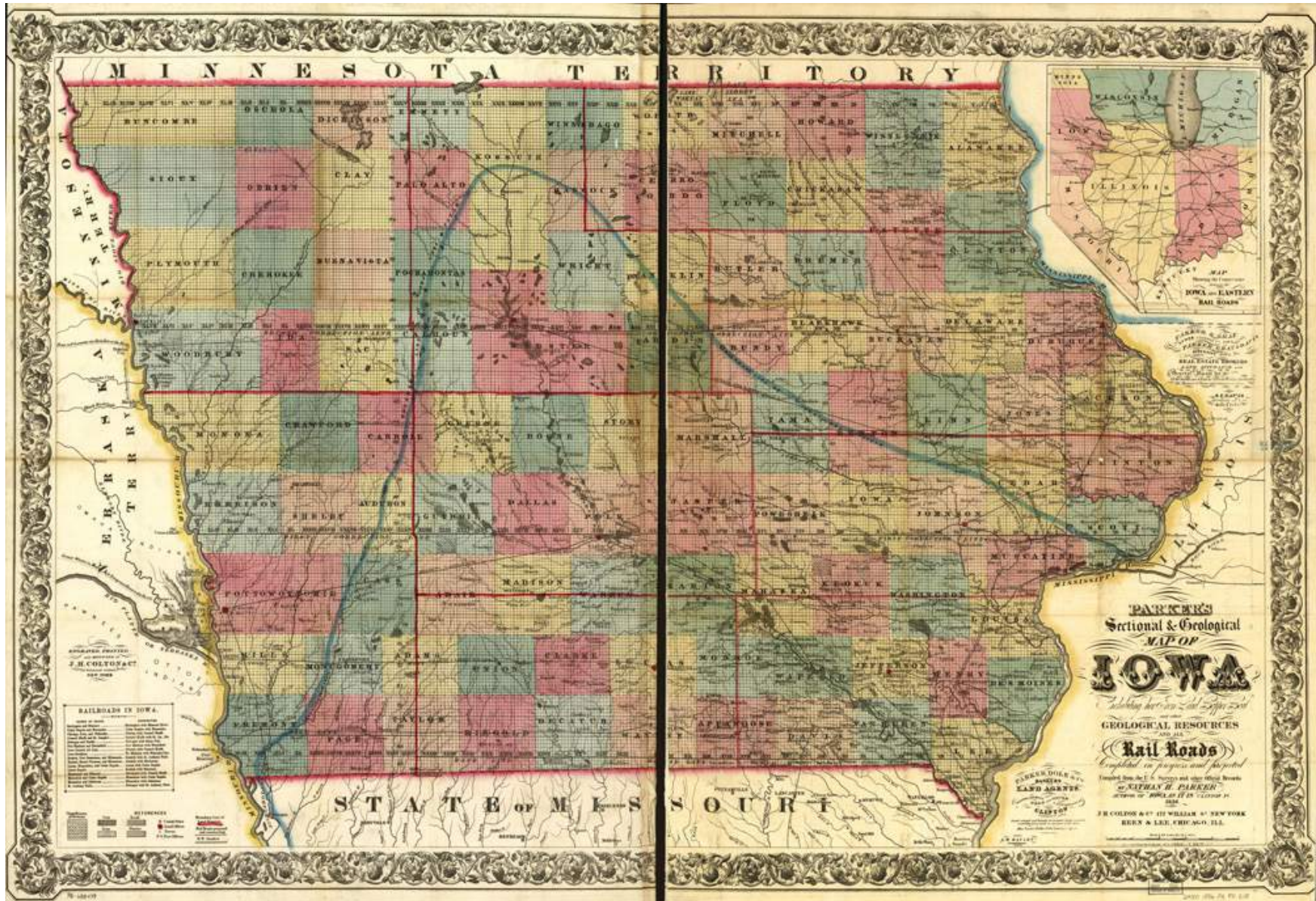
STATE OF IOWA

TABLE No. 3.—POPULATION OF CITIES, TOWNS, &c.—Continued.

CITIES, TOWNS, &c.	COUNTIES.	WHITE.			FREE COLORED.			Aggregate.
		M.	F.	Total.	M.	F.	Total.	
Hartland	Worth	107	101	208	208
Northwood	do.	92	84	176	176
Boone	Wright	50	31	81	81
Eagle Grove	do.	35	31	66	66
Iowa	do.	20	13	33	33
Liberty	do.	68	59	127	127
Pleasant	do.	89	96	185	185
Troy	do.	68	65	133	133
Vernon	do.	20	8	28	28

NOTE.—No return of subdivisions for the counties of Audubon, Buena Vista, Buncombe, Cherokee, Clay, Emmett, Osceola, and O'Brien.

Parker's Sectional and Geological Map of Iowa, 1856



Parker, Nathan H., "Parker's sectional & geological map of Iowa exhibiting her iron, lead, copper, coal and other geological resources and all rail roads completed in progress, and projected compiled from the U.S. surveys and personal reconnoissance," 1856. Courtesy of Library of Congress

"Davenport and Council Bluffs Railroad," December 20, 1849 (pg. 1)

The Gazette.

ALPHABETICALLY.

DAVENPORT:

Thursday Morning, Dec. 20, 1849.

CONGRESS.
The House of Representatives has not yet been able to reassemble this afternoon, owing to the illness of a member. It is expected that the session will be resumed tomorrow.

THE RAILROAD.
Although the Railroad from Rock Island to Peru is not exactly "being made," in the language of the editors, it is being made in fact. It is being made in fact, and that right speedily, in no longer a matter of doubt or uncertainty.

THE CHARTER.
On the first page of this week's Gazette will be found a full and complete copy of the Charter of the Rock Island and Linn County Railroad Company, one of the most liberal and liberal ever granted in the United States.

THE WHEAT.
Last Monday was the coldest day of the season, the mercury ranging from 9 to 10 degrees below zero. The river has closed above us, here there is still a narrow channel open. At present, Wednesday, there is the gloomy prospect before us of a thaw.

ON WEDNESDAY.
An examination of the map of the Missouri Engineer, as it is most rational man, that is his language, "the citizens of the 'twelve-overs' have struck the right lead in the matter of a Railroad from Rock Island to La Salle."

FORWARD.
The potato crop throughout Iowa appears generally to be a failure the present year. The potato (Northwest) is the chief sufferer. We would suggest to our farmers that they obtain their potatoes the next year from some northern latitude, or plant potatoes, or some other variety less liable than the Northwest to disease.

THE CASH.
We mentioned a few weeks since the discovery of a lead of coal in a 'suburb' of Muscatine. The last number of the Register published news, saying—

THE RAILROAD.

Although the Railroad from Rock Island to Peru is not exactly "being made," in the language of the editors, it is being made in fact. It is being made in fact, and that right speedily, in no longer a matter of doubt or uncertainty.

THE CHARTER.
On the first page of this week's Gazette will be found a full and complete copy of the Charter of the Rock Island and Linn County Railroad Company, one of the most liberal and liberal ever granted in the United States.

THE WHEAT.
Last Monday was the coldest day of the season, the mercury ranging from 9 to 10 degrees below zero. The river has closed above us, here there is still a narrow channel open. At present, Wednesday, there is the gloomy prospect before us of a thaw.

ON WEDNESDAY.
An examination of the map of the Missouri Engineer, as it is most rational man, that is his language, "the citizens of the 'twelve-overs' have struck the right lead in the matter of a Railroad from Rock Island to La Salle."

FORWARD.
The potato crop throughout Iowa appears generally to be a failure the present year. The potato (Northwest) is the chief sufferer. We would suggest to our farmers that they obtain their potatoes the next year from some northern latitude, or plant potatoes, or some other variety less liable than the Northwest to disease.

THE CASH.
We mentioned a few weeks since the discovery of a lead of coal in a 'suburb' of Muscatine. The last number of the Register published news, saying—

TELEGRAPHIC DISPATCHES.

ARRIVAL OF THE EUROPA.
The Europa arrived at Halifax Friday morning, having been away eight days. She has a cargo of passengers and mail, and is expected to arrive at New York on the 23rd inst.

THE CHARTER.
On the first page of this week's Gazette will be found a full and complete copy of the Charter of the Rock Island and Linn County Railroad Company, one of the most liberal and liberal ever granted in the United States.

THE WHEAT.
Last Monday was the coldest day of the season, the mercury ranging from 9 to 10 degrees below zero. The river has closed above us, here there is still a narrow channel open. At present, Wednesday, there is the gloomy prospect before us of a thaw.

ON WEDNESDAY.
An examination of the map of the Missouri Engineer, as it is most rational man, that is his language, "the citizens of the 'twelve-overs' have struck the right lead in the matter of a Railroad from Rock Island to La Salle."

FORWARD.
The potato crop throughout Iowa appears generally to be a failure the present year. The potato (Northwest) is the chief sufferer. We would suggest to our farmers that they obtain their potatoes the next year from some northern latitude, or plant potatoes, or some other variety less liable than the Northwest to disease.

THE CASH.
We mentioned a few weeks since the discovery of a lead of coal in a 'suburb' of Muscatine. The last number of the Register published news, saying—

REPORT OF THE POSTMASTER GENERAL.

A copy of this Report has been forwarded to the Department of Finance, and is now being prepared for publication. It contains a full and complete account of the operations of the Post Office during the year ending June 30, 1849.

THE CHARTER.
On the first page of this week's Gazette will be found a full and complete copy of the Charter of the Rock Island and Linn County Railroad Company, one of the most liberal and liberal ever granted in the United States.

THE WHEAT.
Last Monday was the coldest day of the season, the mercury ranging from 9 to 10 degrees below zero. The river has closed above us, here there is still a narrow channel open. At present, Wednesday, there is the gloomy prospect before us of a thaw.

ON WEDNESDAY.
An examination of the map of the Missouri Engineer, as it is most rational man, that is his language, "the citizens of the 'twelve-overs' have struck the right lead in the matter of a Railroad from Rock Island to La Salle."

FORWARD.
The potato crop throughout Iowa appears generally to be a failure the present year. The potato (Northwest) is the chief sufferer. We would suggest to our farmers that they obtain their potatoes the next year from some northern latitude, or plant potatoes, or some other variety less liable than the Northwest to disease.

THE CASH.
We mentioned a few weeks since the discovery of a lead of coal in a 'suburb' of Muscatine. The last number of the Register published news, saying—

PHILADELPHIA MARKET.

Philadelphia, Dec. 20, 1849. The market for wheat is quiet, and the price is steady. The market for flour is also quiet, and the price is steady. The market for cotton is quiet, and the price is steady.

THE CHARTER.
On the first page of this week's Gazette will be found a full and complete copy of the Charter of the Rock Island and Linn County Railroad Company, one of the most liberal and liberal ever granted in the United States.

THE WHEAT.
Last Monday was the coldest day of the season, the mercury ranging from 9 to 10 degrees below zero. The river has closed above us, here there is still a narrow channel open. At present, Wednesday, there is the gloomy prospect before us of a thaw.

ON WEDNESDAY.
An examination of the map of the Missouri Engineer, as it is most rational man, that is his language, "the citizens of the 'twelve-overs' have struck the right lead in the matter of a Railroad from Rock Island to La Salle."

FORWARD.
The potato crop throughout Iowa appears generally to be a failure the present year. The potato (Northwest) is the chief sufferer. We would suggest to our farmers that they obtain their potatoes the next year from some northern latitude, or plant potatoes, or some other variety less liable than the Northwest to disease.

THE CASH.
We mentioned a few weeks since the discovery of a lead of coal in a 'suburb' of Muscatine. The last number of the Register published news, saying—

DAVENPORT AND COUNCIL BLUFFS RAILROAD.

The committee appointed by the Railroad Convention, recently held at Rock Island, to examine the claims of the Iowa Central Railroad, have reported to the Convention, and the report is as follows:

THE CHARTER.
On the first page of this week's Gazette will be found a full and complete copy of the Charter of the Rock Island and Linn County Railroad Company, one of the most liberal and liberal ever granted in the United States.

THE WHEAT.
Last Monday was the coldest day of the season, the mercury ranging from 9 to 10 degrees below zero. The river has closed above us, here there is still a narrow channel open. At present, Wednesday, there is the gloomy prospect before us of a thaw.

ON WEDNESDAY.
An examination of the map of the Missouri Engineer, as it is most rational man, that is his language, "the citizens of the 'twelve-overs' have struck the right lead in the matter of a Railroad from Rock Island to La Salle."

FORWARD.
The potato crop throughout Iowa appears generally to be a failure the present year. The potato (Northwest) is the chief sufferer. We would suggest to our farmers that they obtain their potatoes the next year from some northern latitude, or plant potatoes, or some other variety less liable than the Northwest to disease.

THE CASH.
We mentioned a few weeks since the discovery of a lead of coal in a 'suburb' of Muscatine. The last number of the Register published news, saying—

"The Railroad" Newspaper Article, December 2, 1849

The Gazette.

ALFRED ANDERSON, Editor.
DAVENPORT.
Wednesday Evening, Dec. 2, 1849.

CONGRESS.
The House of Representatives have, as yet been able to reconcile their differences sufficiently to elect a Speaker. On Wednesday last, W. J. Brown, of Indiana, received 115 votes—two more were voted than he had obtained at the first meeting. By reference to our table graphic description it will be observed, that a narrow discrepancy exists in the votes cast on the same day, and that the result was not the same as was reported by the press.

THE RAILROAD.
Although the Railroad from Rock Island to Peru is not exactly "being made," in the language of the adage, "conditioned" in respect to the work, yet that it will be completed, and that right speedily, is no longer a matter of doubt or uncertainty.

THE CHURCH.
On the first page of this week's Gazette will be found the Charter of the Rock Island and Leavelle Railroad Company, one of the most liberal charters ever granted in the United States.

MARSHAL COLLIER.
This place appears to be in a flourishing condition. The Faculty, we perceive, have concluded to deliver a Spring Course of instruction, commencing the second Monday in March next.

THE WEATHER.
Last Monday was the coldest day of the season, the mercury ranging from 5 to 10 degrees below zero.

ON THE TRUCK.
A reminiscence of the army of Illinois has been published in the County of the Mountain Explorer, in its recent issue.

FRATERNITY.
The points kept throughout Iowa appear generally to be a failure the present year.

ON THE MOUNTAIN.
We mentioned a few weeks since the discovery of a lead lode in a "suburb" of Muscatine.

THE COAL BURNING.
The coal burning is interestingly rapid at the present time.

THE RAILROAD.

Although the Railroad from Rock Island to Peru is not exactly "being made," in the language of the adage, "conditioned" in respect to the work, yet that it will be completed, and that right speedily, is no longer a matter of doubt or uncertainty.

THE CHURCH.
On the first page of this week's Gazette will be found the Charter of the Rock Island and Leavelle Railroad Company, one of the most liberal charters ever granted in the United States.

MARSHAL COLLIER.
This place appears to be in a flourishing condition. The Faculty, we perceive, have concluded to deliver a Spring Course of instruction, commencing the second Monday in March next.

THE WEATHER.
Last Monday was the coldest day of the season, the mercury ranging from 5 to 10 degrees below zero.

ON THE TRUCK.
A reminiscence of the army of Illinois has been published in the County of the Mountain Explorer, in its recent issue.

FRATERNITY.
The points kept throughout Iowa appear generally to be a failure the present year.

ON THE MOUNTAIN.
We mentioned a few weeks since the discovery of a lead lode in a "suburb" of Muscatine.

THE COAL BURNING.
The coal burning is interestingly rapid at the present time.

WELSHMANSHIP DISPATCHES.

ARRIVAL OF THE EUROPA.
The Europa, arriving at Halifax Friday morning, arrived here yesterday morning.

THE CHURCH.
On the first page of this week's Gazette will be found the Charter of the Rock Island and Leavelle Railroad Company, one of the most liberal charters ever granted in the United States.

MARSHAL COLLIER.
This place appears to be in a flourishing condition. The Faculty, we perceive, have concluded to deliver a Spring Course of instruction, commencing the second Monday in March next.

THE WEATHER.
Last Monday was the coldest day of the season, the mercury ranging from 5 to 10 degrees below zero.

ON THE TRUCK.
A reminiscence of the army of Illinois has been published in the County of the Mountain Explorer, in its recent issue.

FRATERNITY.
The points kept throughout Iowa appear generally to be a failure the present year.

ON THE MOUNTAIN.
We mentioned a few weeks since the discovery of a lead lode in a "suburb" of Muscatine.

THE COAL BURNING.
The coal burning is interestingly rapid at the present time.

REPORT OF THE POSTMASTER GENERAL.

A copy of this Report has been sent to the newspapers in advance of its delivery in Congress.

THE CHURCH.
On the first page of this week's Gazette will be found the Charter of the Rock Island and Leavelle Railroad Company, one of the most liberal charters ever granted in the United States.

MARSHAL COLLIER.
This place appears to be in a flourishing condition. The Faculty, we perceive, have concluded to deliver a Spring Course of instruction, commencing the second Monday in March next.

THE WEATHER.
Last Monday was the coldest day of the season, the mercury ranging from 5 to 10 degrees below zero.

ON THE TRUCK.
A reminiscence of the army of Illinois has been published in the County of the Mountain Explorer, in its recent issue.

FRATERNITY.
The points kept throughout Iowa appear generally to be a failure the present year.

ON THE MOUNTAIN.
We mentioned a few weeks since the discovery of a lead lode in a "suburb" of Muscatine.

THE COAL BURNING.
The coal burning is interestingly rapid at the present time.

PHILADELPHIA DISPATCH.

Interesting from Washington—Disunion threatened—Flight to the House.

THE CHURCH.
On the first page of this week's Gazette will be found the Charter of the Rock Island and Leavelle Railroad Company, one of the most liberal charters ever granted in the United States.

MARSHAL COLLIER.
This place appears to be in a flourishing condition. The Faculty, we perceive, have concluded to deliver a Spring Course of instruction, commencing the second Monday in March next.

THE WEATHER.
Last Monday was the coldest day of the season, the mercury ranging from 5 to 10 degrees below zero.

ON THE TRUCK.
A reminiscence of the army of Illinois has been published in the County of the Mountain Explorer, in its recent issue.

FRATERNITY.
The points kept throughout Iowa appear generally to be a failure the present year.

ON THE MOUNTAIN.
We mentioned a few weeks since the discovery of a lead lode in a "suburb" of Muscatine.

THE COAL BURNING.
The coal burning is interestingly rapid at the present time.

DAVENPORT AND COUNCIL BLUFFS.

The committee appointed by the Railroad Convention, recently held at Leavelle, Va., to address the citizens of Iowa in relation to the above Railroad, have discharged their duty in a very satisfactory manner.

THE CHURCH.
On the first page of this week's Gazette will be found the Charter of the Rock Island and Leavelle Railroad Company, one of the most liberal charters ever granted in the United States.

MARSHAL COLLIER.
This place appears to be in a flourishing condition. The Faculty, we perceive, have concluded to deliver a Spring Course of instruction, commencing the second Monday in March next.

THE WEATHER.
Last Monday was the coldest day of the season, the mercury ranging from 5 to 10 degrees below zero.

ON THE TRUCK.
A reminiscence of the army of Illinois has been published in the County of the Mountain Explorer, in its recent issue.

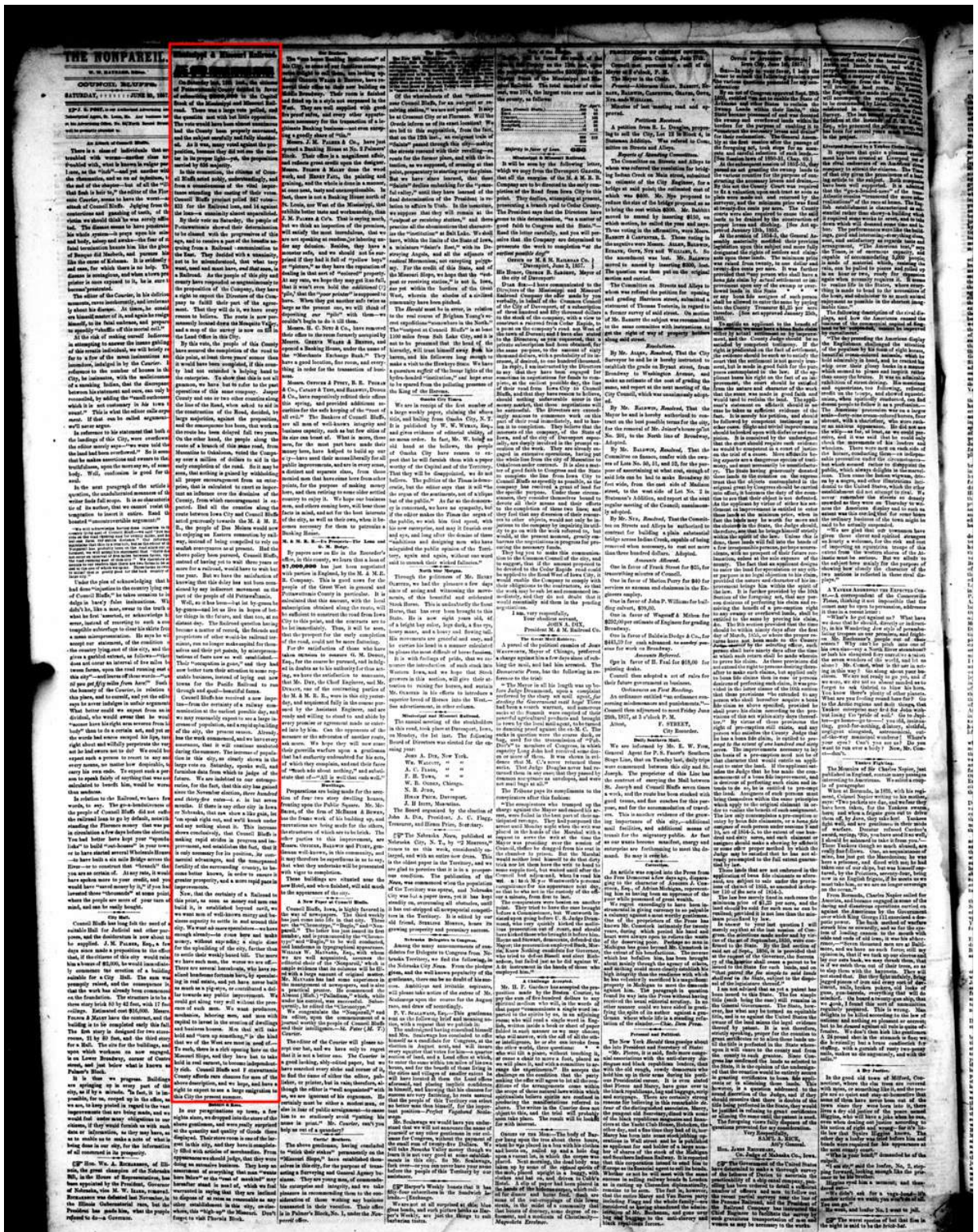
FRATERNITY.
The points kept throughout Iowa appear generally to be a failure the present year.

ON THE MOUNTAIN.
We mentioned a few weeks since the discovery of a lead lode in a "suburb" of Muscatine.

THE COAL BURNING.
The coal burning is interestingly rapid at the present time.

"Mississippi and Missouri Railroad" Newspaper

Article Part 2, June 20, 1857



THE NONPAREIL

W. W. BARNES, Proprietor.

Published every Saturday.

Vol. 1, No. 1.

June 20, 1857.

Price 10 Cents.

Advertisements as usual.

Published by W. W. Barnes.

Printed at the Nonpareil Office.

City of Council Bluffs.

June 20, 1857.

Page 2.

Mississippi and Missouri Railroad.

Article Part 2.

June 20, 1857.

Courtesy of Library of Congress.

The "Mississippi and Missouri Railroad" is a project of great importance to the State of Iowa. It is a project which will connect the Mississippi River with the Missouri River, and thus open up a new route of commerce between the two great waterways of the West. The project is one which has long been the dream of the people of Iowa, and it is now being carried out by the hands of the State.

The project is one which will do much to benefit the State. It will open up a new route of commerce between the Mississippi and Missouri Rivers, and thus give the people of Iowa a new outlet for their products. It will also give the people of Iowa a new means of transportation, and thus make it easier for them to travel between the two great waterways of the West.

The project is one which will do much to benefit the State. It will open up a new route of commerce between the Mississippi and Missouri Rivers, and thus give the people of Iowa a new outlet for their products. It will also give the people of Iowa a new means of transportation, and thus make it easier for them to travel between the two great waterways of the West.

The project is one which will do much to benefit the State. It will open up a new route of commerce between the Mississippi and Missouri Rivers, and thus give the people of Iowa a new outlet for their products. It will also give the people of Iowa a new means of transportation, and thus make it easier for them to travel between the two great waterways of the West.

The project is one which will do much to benefit the State. It will open up a new route of commerce between the Mississippi and Missouri Rivers, and thus give the people of Iowa a new outlet for their products. It will also give the people of Iowa a new means of transportation, and thus make it easier for them to travel between the two great waterways of the West.

The project is one which will do much to benefit the State. It will open up a new route of commerce between the Mississippi and Missouri Rivers, and thus give the people of Iowa a new outlet for their products. It will also give the people of Iowa a new means of transportation, and thus make it easier for them to travel between the two great waterways of the West.

The project is one which will do much to benefit the State. It will open up a new route of commerce between the Mississippi and Missouri Rivers, and thus give the people of Iowa a new outlet for their products. It will also give the people of Iowa a new means of transportation, and thus make it easier for them to travel between the two great waterways of the West.

The project is one which will do much to benefit the State. It will open up a new route of commerce between the Mississippi and Missouri Rivers, and thus give the people of Iowa a new outlet for their products. It will also give the people of Iowa a new means of transportation, and thus make it easier for them to travel between the two great waterways of the West.

The project is one which will do much to benefit the State. It will open up a new route of commerce between the Mississippi and Missouri Rivers, and thus give the people of Iowa a new outlet for their products. It will also give the people of Iowa a new means of transportation, and thus make it easier for them to travel between the two great waterways of the West.

The project is one which will do much to benefit the State. It will open up a new route of commerce between the Mississippi and Missouri Rivers, and thus give the people of Iowa a new outlet for their products. It will also give the people of Iowa a new means of transportation, and thus make it easier for them to travel between the two great waterways of the West.

The project is one which will do much to benefit the State. It will open up a new route of commerce between the Mississippi and Missouri Rivers, and thus give the people of Iowa a new outlet for their products. It will also give the people of Iowa a new means of transportation, and thus make it easier for them to travel between the two great waterways of the West.

The project is one which will do much to benefit the State. It will open up a new route of commerce between the Mississippi and Missouri Rivers, and thus give the people of Iowa a new outlet for their products. It will also give the people of Iowa a new means of transportation, and thus make it easier for them to travel between the two great waterways of the West.

"Mississippi and Missouri Railroad," The Council Bluffs Nonpareil, pg. 2, 20 June 1857. Courtesy of Library of Congress

